

GFM925

Motor Driver System For Swing Folding Gate
Proven Power, Time-Tested Durability



Reduce 95% Electricity & CO2 Emission

An auto-gate driver motor system burns about 10 to 20W of electric during standby. Hybrid Power System will cut off the main supply during standby. The electronic system will get power from the standby battery at merely 0.2 Watt.

The main supply will only be on when running the motor or charging the motor or charging the battery. This results in a reduction of energy consumption by 95%.



AntiSpy

Encrypted rolling code technology that prevents replay attacks from unauthorized adversaries.



Panic Alarm

User can activate the alarm to alert others and seek help in case of an emergency.



Mobile App Remote Control - Keep Your Remote Close

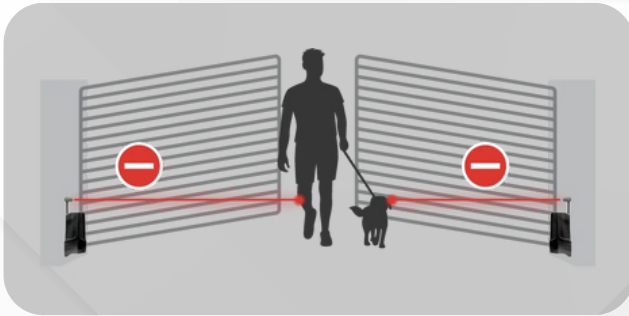
Users can control DCMOTO's autogate via the "Digicraft Home" mobile app. An IoT Hub v2 by Digicraft Home is required, which pairs with the home WiFi. This setup is ideal for large families or owners of multiple properties, offering the convenience of always having the remote within reach on their phone.



Infrared Safety Beams - Enhanced Safety

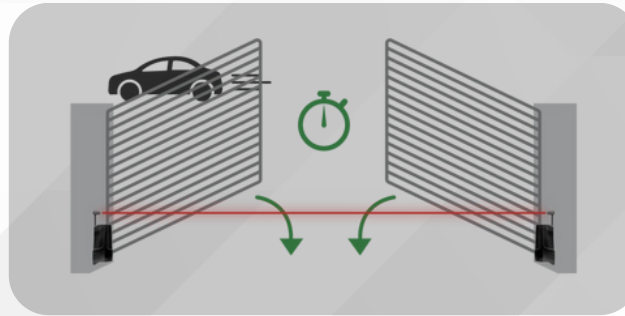
Upgrade your safety with our infrared dual beams dual sensor add-on feature. It is simple to install without requiring extra wiring. This feature is particularly valuable for families with children and pets.

****Product sold separately.**



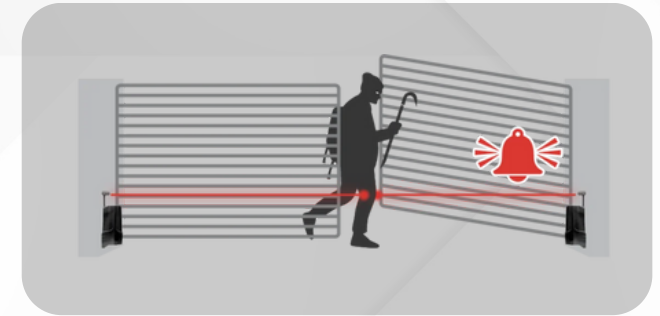
Obstacle Detection

The system uses infrared beams to prevent accidental gate closures and reduce the risk of pinching. If an unexpected obstacle is detected during gate operation, the gate will automatically reverse to a safe position emit an audible warning tone to alert the user of potential hazards. In case of any malfunction, user have the option to override the obstacle detection system.



Auto-Close Timer

Auto-close timer can be enabled when safe beams are installed. Users can set closure intervals of 1 or 2 minutes. This feature ensures the gate closes automatically, preventing instances where users may forget to close the gate.

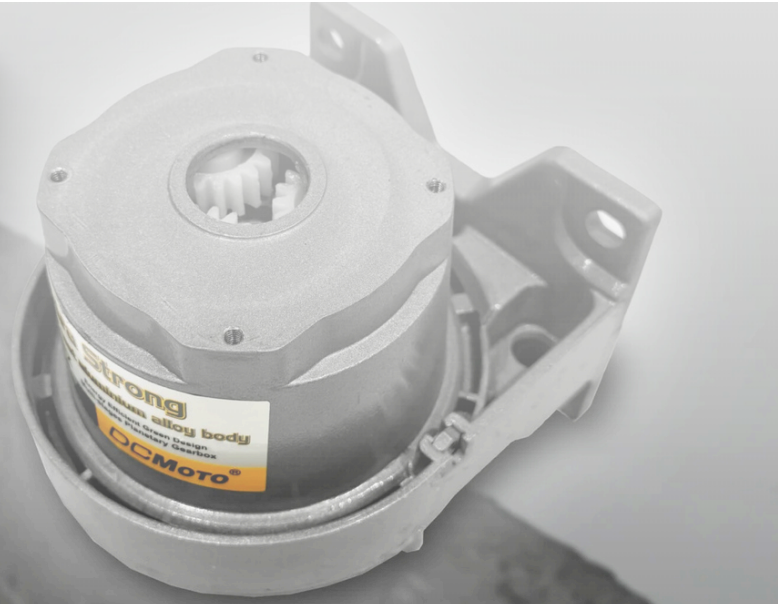


Intruder Alarm

Intruder alarm can be armed when safety beams are installed. When armed, the siren will be triggered upon detection of obstacles by the infrared safety beams, alerting users nearby neighbors or security.

Efficient Rotary Driver

Our motor system employ a planetary gearbox reduction mechanism, optimized for powering swing and folding gates with high torque and high efficiency, ensuring a durable lifetime.



Backup Battery

We provide peace of mind with a backup battery for our motor system, ensuring continued operating for up to 3* days in case of a power failure.



Manual Key Override

In unforeseen circumstances, users can utilize the backup manual override physical key to bypass the motor's electric lock.



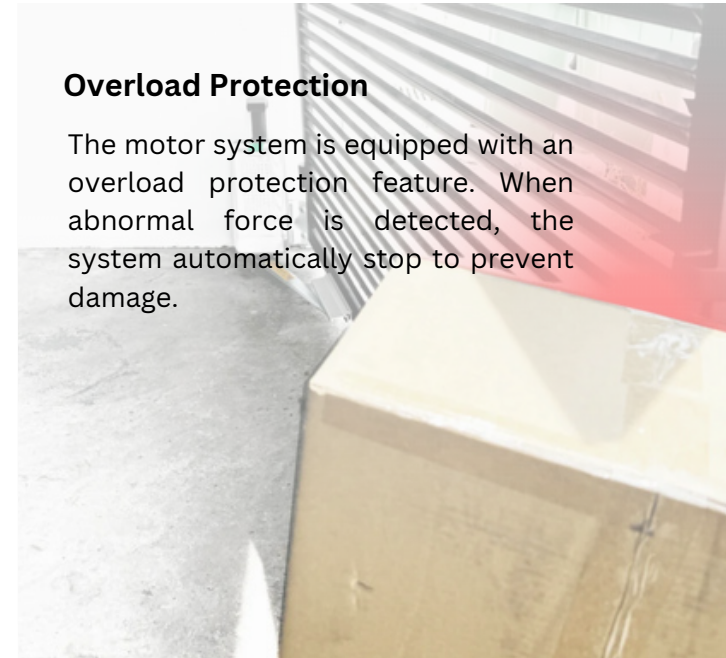
Motion Alert

When enabled, the motor system will produce a motion alert sound while operating the autogate.



Overload Protection

The motor system is equipped with an overload protection feature. When abnormal force is detected, the system automatically stop to prevent damage.



Technical Specification

^ Maximum Rating

	(per wing)	
	Max width (m)	Max weight (kg)
Swing Gate	2	150
Folding Tracked Gate	4	200
Folding Trackless Gate	3.4	150

^ Electrical Specification

Motor Type:	120W PMDC Motor
Standard Operating Voltage:	12V ~ 19V (DC)
Standard Power Usage:	0.015A (Standby) 12A (Maximum Operating Current)
Battery Life:	3 Days Standby* * Performance may vary due to loading condition * Tested under laboratory-controlled conditions using a 7AH 12V Battery (Healthy, Full Charge) and a single motor

^ Mechanical Specification

Driver:	Single Arm Rotary Motion
Gear System:	25 element 4 stage planetary gear train
Transmission Reduction Ratio:	1:2310
Maximum Output Torque:	196Nm (dynamic) 318Nm (static)
Standard Operating Time:	(90 Degree Movement) 10 s (90%)** 16 s (100%)**
Recommended Operation Rate:	Less than 100 operations per day **Performance may vary based on gate mass and type

^ Electronics Specification

Processor:	Microcontroller Embedded System
Remote Radio Frequency:	315MHz
Remote Radio Protocol:	Digicraft® AntiSpy Technology
Motion Control:	Digicraft® 3-Speed Motion System

^ Safety & Security Features

Overload Protection:	Yes
Obstacle Detection:::	Yes (Safety Beam Required)
Locking Mechanism:	Electromagnetic lock with manual key release
Panic Alarm:	Yes (Triggered from remote control)
Intruder Alarm:	Yes (Arming Required)
Gate Motion Alert:	Yes (Setting Required)

^ Additional Features

Smart Home Hub Control:	Yes (Digicraft Home IoT Hub Required)
Backup Battery:	Yes



Office Line

+6 03-8066 8482
+6 03-8060 2818



Hot Line

+6 019-348 1168
+6 013-234 6821



Email

sales@vshgroup.com.my



Address

No.93, Jalan BP 7/2, Bandar Bukit Puchong, 47120 Puchong, Selangor.

