

GAC-RGB-25RG

LED Traffic Light For Automatic Barrier



OVERVIEW

The LED Traffic Light for Automatic Barrier is designed to provide clear visual guidance for vehicles at entry and exit points. Integrated with automatic barrier systems, it helps control traffic flow efficiently by indicating STOP (Red) and GO (Green) signals, improving safety and reducing confusion in parking areas and controlled access zones.

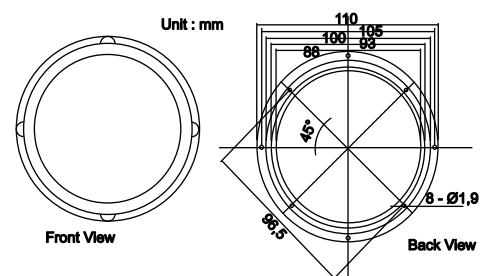
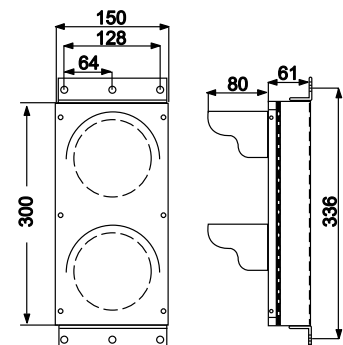
FEATURES:

- ☑ More easy indicator for barrier open & close.
- ☑ IP65 weatherproof enclosure
- ☑ LED display

SPECIFICATION:

Color LED Quantity	RED 45 pcs, GREEN 45pcs
Light Intensity	≥225cd
Wavelength	625±5nm
Viewing Angle	30°
Power	RED : ≤2W GREEN : ≤4W
Working Voltage	DC-12V
Operating Temperature	-30°C ~ +60°C
Certificates	CE, Chinese GB14887-2003 standards
IP Rating	IP65
Housing Material	Metal with painting/Aluminium/Stainless
Life Span	>100,000 Hours
Power Consumption	Full ball ≤ 4W

DIMENSIONS:



WIRING CONNECTION:

