

AC2000

AP controller

Product Description

IP-COM AC2000 is an AP controller, specially designed to provide network solution for SMB such as hotels, K-12 schools. Abundant wireless features management including editing AP's name, SSID, Security key, RSSI threshold, Client limitation, VLAN, output power, Client isolation, SSID isolation, 5G band steering. Built-in captive portal server enable it to deliver Wi-Fi Marketing features including customized welcome page and redirect page, 3000 users authentication system, connected device type and user statistic. Otherwise AC2000 can manage AP and AP controller deployed in branch or location remotely. All these features help the administrator to install, manage and monitor APs at a single location more easily.



AC2000

- 512 AP Management
- Captive Portal
- Remote AP Management
- Remote AC Management

Key Features

- Easy to configure, manage and monitor APs
- Maximum AP managed number up to 512
- Remote manage multi branch AP and AP controller
- Built-in captive portal server and customized welcome page
- Access device type and customer behavior statistic

Product Features

Abundant wireless feature management

AC2000 come with abundant wireless feature management including editing AP's name, SSID, Security key, RSSI threshold, Client limitation, VLAN, output power, Client isolation, SSID isolation, 5G band steering. Moreover you can monitor AP and clients online status after all setup finished.

Multi branch AP and AP Controller Management

AC2000 can manage AP and AP controller remotely over internet helps administrator manage and monitor multi branch or location Wi-Fi network more easily.

Multipurpose Wi-Fi Marketing System

AC2000 integrate with an building Wi-Fi marketing system to provide administrator with value-added features including:

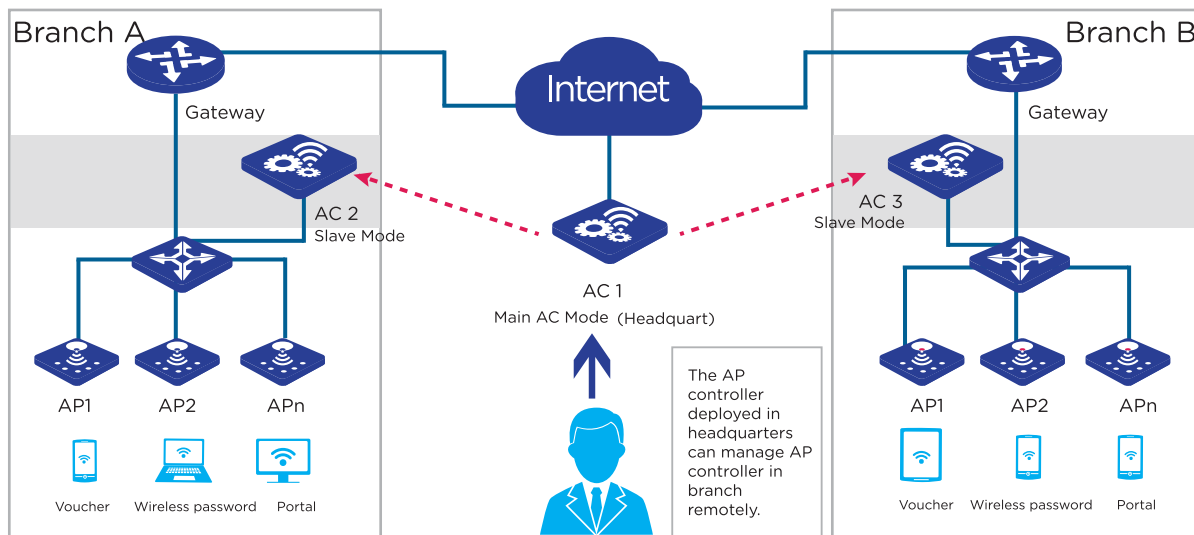
- Captive authentication supported
- Built-in 3000 user authentication server
- Customer welcome page and redirect website
- Connected device type and customer behavior statistic

Easy to deploy, Easy to manage






AC2000 adopt of 19 inch rackmount design to mount on the rack perfectly. And you just plug it into the existing network through branch deployment to manage all Aps without changing any network topology.

Application Scenarios

AC2000 is designed to provide wireless solution for hotel, K-12 education and SMB. It features with multiple branch AP or AP controller management to make administrator easier to manage AP or AP controller remotely.



Related Products

	AP255	<ul style="list-style-type: none"> ● 2.4GHz 11n 300Mbps ● 86mm EU type wall plate design ● Compatible with PoE 802.3af ● 2*FE LAN, 1*RJ11 port, 1* USB charger port ● Centralized management by AC1000/AC2000/AC3000
	AP325	<ul style="list-style-type: none"> ● 2.4G 11n 300Mbps ● Aesthetic ceiling design ● Compliant with PoE 802.3af ● Tagging VLAN ID for multi SSID ● Centralized management by AC1000/AC2000/AC3000
	AP365	<ul style="list-style-type: none"> ● 11AC dual band 1750Mbps ● Aesthetic ceiling design ● Compliant with PoE 802.3at ● Two Gigabit Ethernet Port ● Tagging VLAN ID for multi SSID ● 5GHz band steering ● Centralized management by AC1000/AC2000/AC3000
	AP515	<ul style="list-style-type: none"> ● 2.4GHz 300Mbps ● IP64 waterproof enclosure ● 7dbi directional antenna ● Compliant with PoE 802.3at ● Centralized managed by AC1000/AC2000/AC3000
	M50	<ul style="list-style-type: none"> ● Maximum user capacity up to 150 ● Smart QoS Bandwidth Management ● Multi WAN load balance and bandwidth combination ● PPTP, L2TP, IPsec VPN server and client supported ● Integrated with AP controller feature to manage 16 IP-COM AP ● Built-in portal server and PPPoE server

Product Specification

Product Info

Model	AC2000
Deployment	Rack mount
Dimension	294*197.8*44mm

Hardware Specification

Standards	IEEE 802.3u/ab
Interfaces	5* 10/100/1000Mbps LAN
LEDs	SYS、POWER、RESET
CPU	800MHz Broadcom ARM
RAM	512MB
Flash	512MB
Max Power Consumption	12W

Software Specification

Default AP managed number	256
Max AP managed number	512
Max online user capacity	3000
Max VLAN group	48
Max Remote AC managed nubmer	64
Max Remote AP managed nubmer	128
Wireless Features Management	Access Point Auto Discovery
	Access Point Auto IP Assignment
	Access Point Device Name Editing
	Access Point SSID Editing
	Access Point Client Limit Editing
	Access Point output power Editing
	Access Point Security Editting (None,WPA-PSK,WPA2-PSK)
	Access Point isolation Editting
	Access Point SSID isolation Editting
	Access Point channel Select
	VLANs for Access Point- Multiple SSIDs
	5G Band Steering editing
	Client isolation editing
	SSID isolation editting
	RSSI threshold for client access editing
	Monitor the AP online status
	Wireless Client Monitoring
Batch AP Reset capability	

Product Specification

Software Specification

Wireless Features Management	Batch AP reboot capability
	batch Firmware Upgrade Capability
	Schedule reboot AP capability
	AP failure alarm
	AP traffic alarm
	AP clients limit alarm
	AP&clients list export
	Built-in captive portal server
	Customerized user Internet access time
	Ad push based SSID and device type
Wireless Marketing features	Customerized welcome page
	Customerized redirect page
	Connected device type statistic
	Connected user behavior statistc
	IP Setting
	System Time & Date
	Firmware upgrade
	Configurating backup and restore
	Device Reboot
	Username and password
System Tools	System log

Operating Environment

Operating Temperature	-10 C - 45 C
Storage Temperature	-30 C - 70 C
Operating Humidity	10%–90%(non-condensing)
Storage Humidity	5%–90%RH (non-condensing)
Default Login IP	192.168.10.1
Default username	admin
Default Password	admin
Certification	CCC/FCC/CE/ROHS