

AP355/AP365

11AC Access Point

Product Introduction

IP-COM 11ac series AP(include AP355, AP365) are enterprise-grade, high performance Gigabit Wi-Fi access points, prepared for ultra-high density environments. Through the 802.11ac Wi-Fi technology and enhanced transmit power and receive sensitivity, it can increase the scope of coverage, improve access density and operation stability.

Under the management and control of the IP-COM series AC, it supports advanced functions like Access Control, Load Balancing, Seamless Roaming, Multiple Authentication Modes and so on, are ideal match for Medium-Sized Enterprise offices, conference halls, multimedia classrooms WLAN Deployment.



AP355

- 11AC dual band 1200Mbps
- Aesthetic ceiling design
- Compliant with PoE 802.3at
- Gigabit Ethernet Port
- Tagging VLAN ID for multi SSID
- 5GHz band steering
- Centralized management by AC1000/AC2000/AC3000



AP365

- 11AC dual band 1750Mbps
- Aesthetic ceiling design
- Compliant with PoE 802.3at
- Two Gigabit Ethernet Port
- Tagging VLAN ID for multi SSID
- 5GHz band steering
- Centralized management by AC1000/AC2000/AC3000

Key Features

- Dual concurrent 2.4Ghz 802.11n/g/b and 5Ghz 802.11ac/n/a radios
- 5GHz band steering
- Support 802.3at PoE standard
- Portal authentication supported with AP controller

Product Features

Low-profile industrial design

With its sleek, low profile design and controllable LEDs, blends into hotel, office environments

Lower cost of implementation

Supporting PoE standard, AP can integrate into your existing 802.3at power and network infrastructure.

High performance

Dual-band design delivers high capacity and high performance to new 802.11ac and legacy 802.11a/b/g/n clients. The 802.11ac Gigabit Wi-Fi along with Gigabit Ethernet enabling fast data forwarding without any bottleneck, is ideal for high-bandwidth applications such as streaming video, P2P download and gaming.

Advanced Wi-Fi security

IP-COM AP supports almost all the latest encryption and authentication mechanisms (such as WEP, WPA-PSK, 802.1X, WEB Portal, Social login), making it simple for administrators to manage enterprise security and guest access.

Automatic RF optimization

Advanced RF optimization with automatic channel, band and power level selection, to reduce co-channel interference. AP can recognize various channels being used and automatically switch to the best available channel to provide the best experience for users.

Airtime Fairness

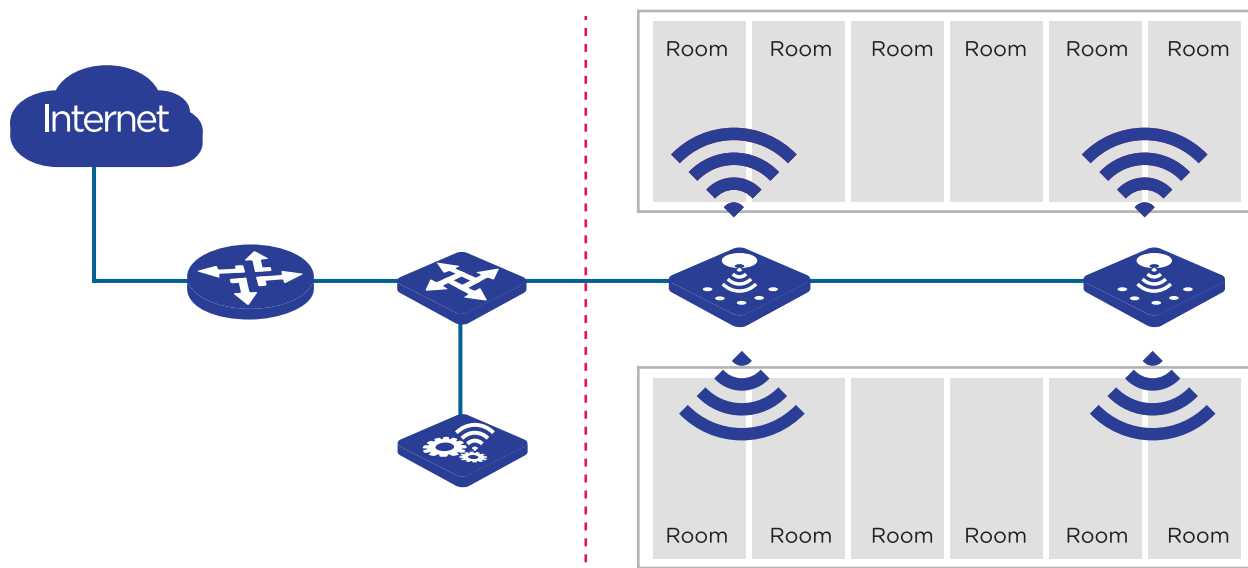
Airtime fairness is an advanced scheduling technique that gives equal airtime to each client regardless of its theoretical data rate. This will ensure higher download speed and increase overall network capacity.

Dual Fat/Fit mode

When the network starts small, users can acquire the AP and set it to Fat mode. As the user grows and more devices are installed, it's recommended to add an IP-COM AC to simplify network management and centrally manage all APs. It can significantly reduce deployment and management effort by automating device provisioning, firmware upgrades and policy enforcement.

Application Scenarios

The AP355/AP365 are enterprise-class, high performance 802.11ac Access Point, targeted at high capacity environments including SMB offices, hotels, and restaurants.



Related Products



AP325

- 2.4GHz 300Mbps
- Aesthetic ceiling design
- Compliant with PoE 802.3af
- 100Mbps Ethernet Port
- Tagging VLAN ID for multi SSID
- Centralized management by AC1000/AC2000/AC3000



AP340

- 2.4GHz 300Mbps
- Aesthetic ceiling design
- Compliant with PoE 802.3at
- 1000Mbps Ethernet Port
- Tagging VLAN ID for multi SSID
- Centralized management by AC1000/AC2000/AC3000



AC2000

- Easy to configure, manage and monitor Aps
- Maximum AP managed number up to 512
- Remote manage multi branch AP and AC
- Built-in captive portal server and customized welcome page
- Access device type and customer behavior statistic



M50

- Maximum user capacity up to 150
- Smart QoS Bandwidth Management
- Multi WAN load balance and bandwidth combination
- PPTP,L2TP,ipsec VPN server and client supported
- Integrated with AP controller feature to manage 16 IP-COM AP
- Built-in captive portal server and PPPoE server

Product Specifications

Product Information		
Model	AP355	AP365
Deployment	Ceiling and Wall Mount	Ceiling and Wall Mount
Dimensions	200*200*30mm	234*234*58.4mm
Application Scenarios	Medium-Sized Enterprise offices, Shopping Malls, and Restaurants etc	Medium-Sized Enterprise offices, Shopping Malls, and Restaurants etc
Hardware Specifications		
Frequency Range	2.4GHz/5GHz	2.4GHz/5GHz
Maximum wireless speed	1200Mbps	1750Mbps
Compliant Standards	IEEE 802.11n/g/b, 802.11ac/n/a	IEEE 802.11n/g/b, 802.11ac/n/a
User Capacity	70 clients	75 clients
Interfaces	1*10/100/1000Mbps PoE/LAN port, 1*DC Power Jacket	2*10/100/1000Mbps PoE/LAN port
Button	1*RESET	1*RESET
Antennas	2x Integrated dualband, Omni-directional, 2.4GHz 4dBi gain, 5GHz 4dBi gain	3x Integrated 2.4GHz Omni-directional, 4dBi gain 3x Integrated 5GHz Omni-directional, 5dBi gain
Max Power Consumption	17W	23W
LED indicator	PWR, 2.4G, 5G	PWR, 2.4G, 5G
Power Supply	PoE 802.3at	PoE 802.3at
Maximum Transmit Power	400mw(26dbm)	400mw(26dbm)
Reception sensitivity	MCS0: -88dbm MCS7: -72dbm	MCS0: -88dbm MCS7: -72dbm
Software Specifications		
IP Setting	Support	Support
Management VLAN	Modify from Web UI or AP Controller	Modify from Web UI or AP Controller
Operating mode	AP,WDS,Client+AP	AP,WDS,Client+AP
WiFi Radio	Enable or Disable	Enable or Disable
SSID Number	12	12
SSID Broadcast	Enable or Disable	Enable or Disable
AP Isolation	Support	Support
Clients Limit	Connected user number limitation for every SSID	Connected user number limitation for every SSID
VLAN tagging for SSID	Support	Support
RSSI Threshold	Support	Support
WMM Capable	Support	Support
APSD Capable	Support	Support
Wireless Client Statistic	Support	Support

Product Specification

Software Specifications		
Transmission Power	Adjustable step by dbm	Adjustable step by dbm
Access Control	Connect limitation based on mac address	Connect limitation based on mac address
Wireless Security	64/128 WEP,WPA-PSK,WPA2-PSK, WPA&WPA2-PSK,WPA,WPA2	64/128 WEP,WPA-PSK,WPA2-PSK, WPA&WPA2-PSK,WPA,WPA2
DHCP Server	Support	Support
VPN Pass-Through	PPTP,L2TP	PPTP,L2TP
Schedule Reboot	Support	Support
Circularly Reboot	Support	Support
Page Timeout	Support	Support
Network Diagnoses	Ping	Ping
Time&Date Setting	Support	Support
System Log	Support	Support
Backup Configuration	Support	Support
Restore configuration	Support	Support
Reset device	Support from Web UI or AP Controller	Support from Web UI or AP Controller
Username Management	Support from Web UI or AP Controller	Support from Web UI or AP Controller
Reboot Device	Support from Web UI or AP Controller	Support from Web UI or AP Controller
Firmware upgrade	Support from Web UI or AP Controller	Support from Web UI or AP Controller
Centralized Management	Managed by AC1000/AC2000/AC3000	Managed by AC1000/AC2000/AC3000
Working Environment		
Operation Temperature	-10 C -40 C	-10 C -45 C
Storage Temperature	-30 C - 70 C	-30 C - 70 C
Operation Humidity	10%–90% (non-condensing)	10%–90% (non-condensing)
Storage Humidity	10%–90% (non-condensing)	10%–90% (non-condensing)
Default Login IP	192.168.0.254	192.168.0.254
Default User Name	admin	admin
Default Password	admin	admin
Certifications	FCC/CE/RoHS	FCC/CE/RoHS