

# EW9

## AC1200 Enterprise Mesh WiFi System

1200M 11AC Wave2 Wi-Fi, True Mesh, Gigabit Port, Dual WAN , Smart Bandwidth Management, Captive Portal, APP Management

---

### Product Description

EW9 is a wireless router from IP-COM specially designed for offices, restaurants, hotels and other places. With advanced true Mesh technology and innovative built-in antennas design, enterprise users can adjust the quantities of EP9 according to the application area and combined with EW9 to form a distributed Mesh network without dead zone. EW9 supports router mode and bridge (AP) mode, which can meet the requirements of small project with Mesh network, or partial Mesh network for large projects. The device adopts full gigabit network interface design with maximum support for dual WAN. It integrates various enterprise functions such as intelligent bandwidth control, WEB authentication, SMS authentication, etc., and can be applied to a variety of application scenarios.



### Key Specifications

- \* 1200Mbps 11AC Wave 2 Wi-Fi
- \* 4\* Gigabit ports, dual WAN capacity
- \* True Mesh technology
- \* APP Management
- \* Supports smart bandwidth control, seamless roaming, web & SMS authentication
- \* Supports wall mount/ceiling mount/pole mount/desk mount

# EP9

## AC1200 Enterprise Mesh WiFi System

1200M 11AC Wave2 Wi-Fi, Mesh Technology, Seamless roaming, Wall mount/ceiling mount/pole mount/desk mount installment

---

### Product Discription

EP9 is Mesh Wi-Fi system extender from IP-COM specially designed for office, restaurant, hotel and other scenarios. With advanced true Mesh technology and innovative built-in omnidirectional antennas design, enterprise users can adjust the quantities of EP9 according to the application area and combined with EW9 to form a distributed Mesh network without dead zone. EP9 provides a variety of mounting methods by mounting brackets and accessories, it supports wall mount/ceiling mount/pole mount/desk mount, and can be applied in a variety of scenarios.



### Key Specifications

- \* 1200Mbps 11ACWave 2 Wi-Fi
- \* True Mesh technology
- \* Seamless Roaming
- \* APP Management
- \* Supports wall mount/ceiling mount/pole mount/desk mount

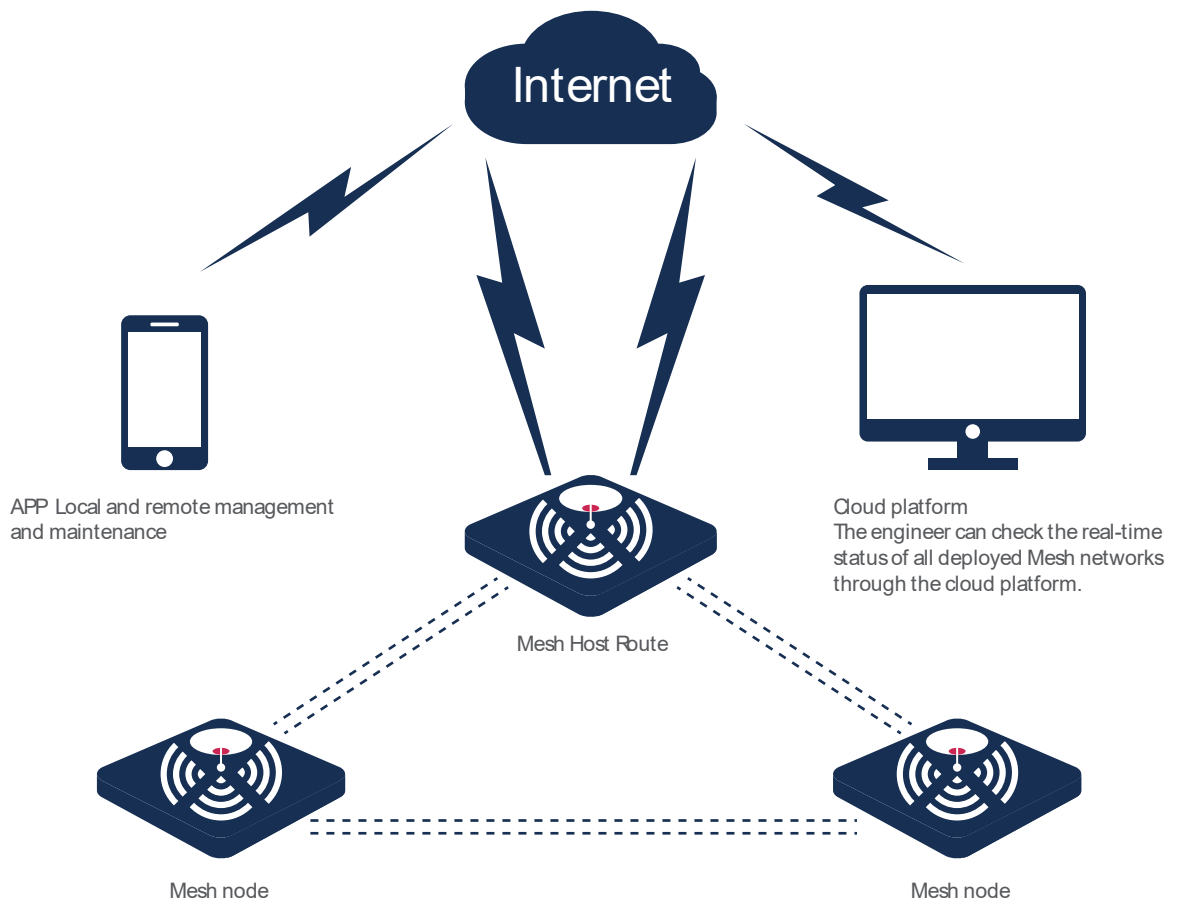
# Application Scenarios

---

## Mesh Network Topology for Small Project

It is designed for office, restaurant, hotel and other SMB segment □

- \* The Mesh device works in router mode, and the host node of Mesh ACTS as the network core router for data forwarding.
- \* Two Mesh satellites nodes and the host build a mesh system.
- \* APP Local and remote management and maintenance. The engineer can check the real-time status of all Mesh networks that they have done through the cloud platform



# Application Scenarios

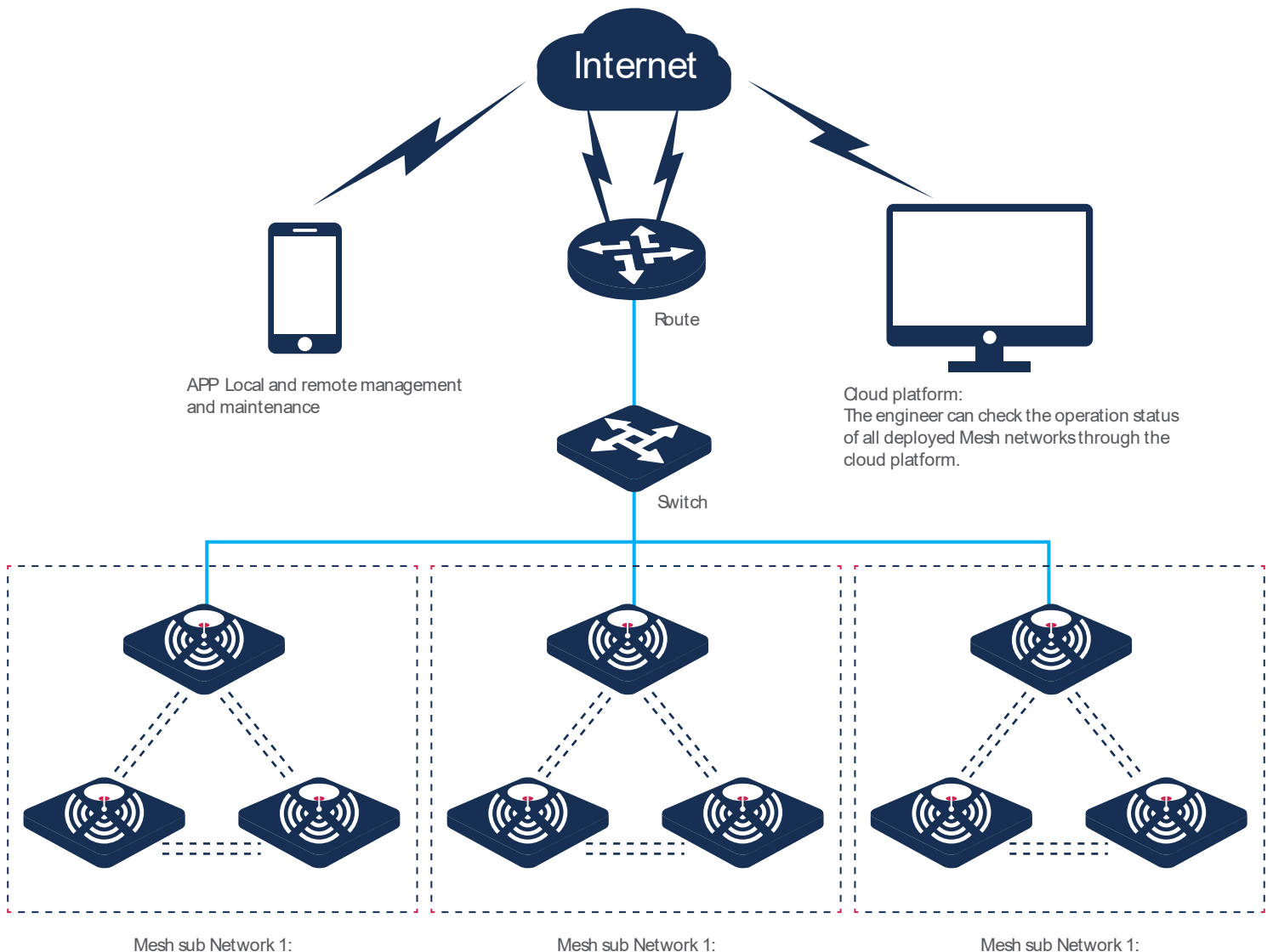
## Mesh Network Topology for Middle Project

It is designed for office, restaurant, hotel and other enterprise project.

\* Three Mesh products are placed in one area to form an independent mesh network system.

Mesh devices of different floors and areas are connected to the switch through the network.  
\* All the mesh nodes work as AP mode at the same time. All nodes can be managed locally and remotely by the APP.

\* The engineer can check the operation status of all deployed Mesh networks through the cloud platform.



# Specification

Category		EW9	EP9	EW12	EP12
Hardware Specification	Frequency	Dua-Band: 2.4G+5G	Dual-Band: 2.4G+5G	Tri-Band: 2.4G+5G+5G	Tri-Band: 2.4G+5G+5G
	Wireless Rate	300+867Mbps	300+867Mbps	400+867+867Mbps	400+867+867Mbps
	11AC Wave 2	√	√	√	√
	Beamforming	√	√	√	√
	Networking Technology	True Mesh	True Mesh	True Mesh	True Mesh
	Wireless Power	2.4G: 19dBm 5G: 19dBm	2.4G: 19dBm 5G: 19dBm	2.4G: 20dBm 5G: 20dBm	2.4G: 20dBm 5G: 20dBm
	Antenna	4*4dBi, Horizontal omnidirectional antenna	4*4dBi, Horizontal omnidirectional antenna	6*4dBi, Horizontal omnidirectional antenna	6*4dBi, Horizontal omnidirectional antenna
	Interface	1*Power Port, 1*Reset button, 4*Gigabit Port	1*Power Port, 1*Reset button	1*Power Port, 1*Reset button, 4*Gigabit Port	1*Power Port, 1*Reset button
Software Specification	WAN Ports	dual WAN	-	dual WAN	-
	QoS	√	√	√	√
	Seamless Roaming	√	√	√	√
Installation and Deployment	Mounting	wall mount/ceiling mount/ pole mount/desk mount	wall mount/ceiling mount/ pole mount/desk mount	wall mount/ceiling mount/ pole mount/desk mount	wall mount/ceiling mount/ pole mount/desk mount
	APP Installation and Configuration	√	√	√	√
	Route Mode and Bridge Mode	√	X	√	X
	Manage by AC	X	X	√	√
	Mesh nodes in one Mesh System	Typical: 3 Max: 9	Typical: 3 Max: 9	Typical: 5 Max: 18	Typical: 5 Max: 18
Management and Maintenance	APP Management	√	√	√	√
	Cloud management	X	X	√	√
Authentication Access	Local Certification	√	√	√	√
	Cloud Certification	X	X	√	√
	Third Party Authentication Access	X	X	√	√
	Behavior Strategy	X	X	√	√
Dimensions	Product ġ 170*170*36mm Packing ġ 260*175*55mm	Product ġ 170*170*36mm Packing ġ 260*175*55mm	Product ġ 170*170*36mm Packing ġ 260*175*55mm	Product ġ 170*170*36mm Packing ġ 260*175*55mm	
Packing List	Bracketx1, Boltx4, Expansion sleevex4, Expansion screwx4, Ribbonx2	Bracketx1, Boltx4, Expansion sleevex4, Expansion screwx4, Ribbonx2	Bracketx1, Boltx4, Expansion sleevex4, Expansion screwx4, Ribbonx2	Bracketx1, Boltx4, Expansion sleevex4, Expansion screwx4, Ribbonx2	
Packing Quantities	20	20	20	20	
Power Dimensions	External switching power supply 12V/1A	External switching power supply 9V/1A	External switching power supply 12V/2A	External switching power supply 12V/2A	
Certification	FCC, CE, RoHS	FCC, CE, RoHS	FCC, CE, RoHS	FCC, CE, RoHS	