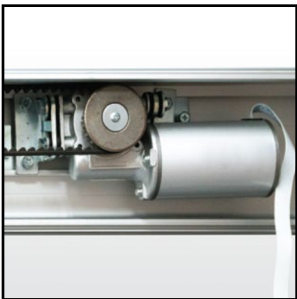




Ranger automatic sliding door operator are easy installed, durable, reliable performance, safe and low noise operation. You can transform your any door rapidly into an automatic sliding door without complication. Range automatic sliding door operator also able to increase convenience and provide barrier-free access for the disabled too.

Ranger automatic sliding door operator highly recommend for application at your living space, working environment etc to make your place more securely.



Heavy-duty Motor

Adopting heavy-duty brushless motor with a long service life & larger torque.



Built-in Control Unit

Easy adjust sliding door precision move according door size & weight.



Reliability

High reliability synchronous belt, drive door forward and backward with help of hanger.



Stable

Adjustable door hanger and clamp type door support even heavier glass door with smooth operation on the railway.



Office Line

+6 03-8066 8482
+6 03-8060 2818



Hot Line

+6 019-348 1168
+6 013-234 6821



Email

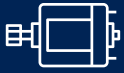
sales@vshgroup.com.my



Address

No.93, Jalan BP 7/2, Bandar Bukit Puchong, 47120 Puchong, Selangor.





High Power Brushless Motor

Adopting a modern design, uses a globally trusted high-power brushless motor and brand new mechanical components.



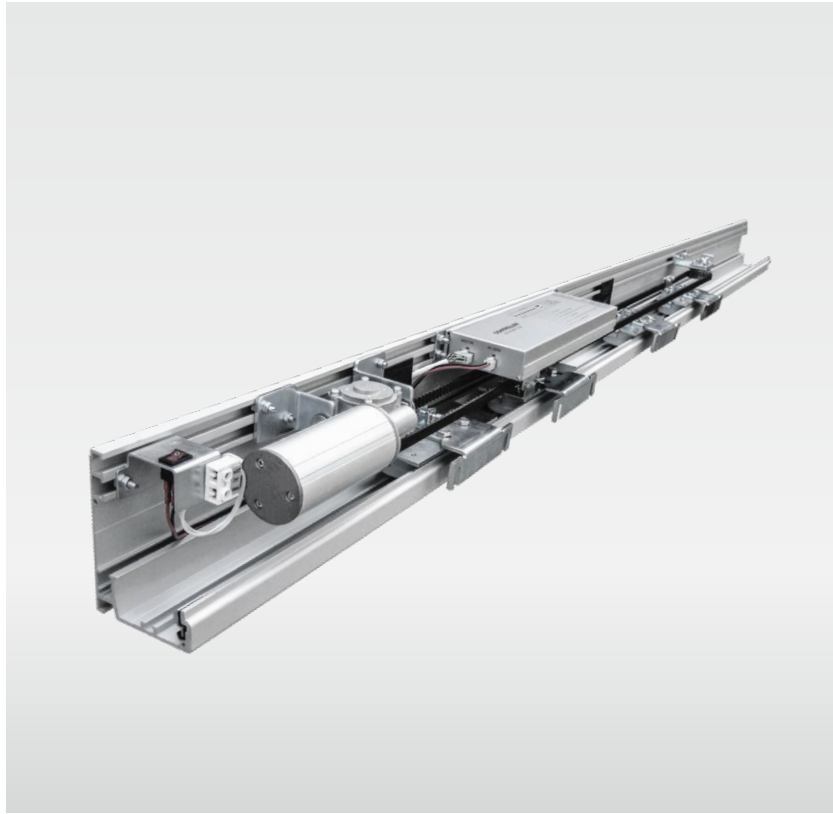
Suitable for Heavy-duty Use

Designed to take oversized or heavy doors & suitable for a wide range of commercial, industrial and residential applications such as large feature doors or large factory doors.

250
KG

Maximum Door Weight
Maximum support door weight up to 250KG.

*All image and specification is subject to change without prior notice.



Technical Data	RG-AT200D-4	RG-AT200D-5	RG-AT200D-6
Length of Rail	4.2M	5M	6M
Door Configuration	Single	/	Double
Door Leaf Weight	≤ 1 x 250KG		≤ 2 x 200KG
Clean Open Width	1000~2800mm		1800~3800mm
Frequency	300~550mm/s(Adjustable)		
Opening Speed	200~500mm/s(Adjustable)		
Closing Speed	1~10s(Adjustable)		
Duty Cycle	AC220V		
Manual Push	<100N		
Power Voltage	50-60Hz		
Power Consumption	≤ 150W		
Environment Temp.	-20°C ~ +50°C		

Standard Colours



White Aluminium
(Similar to RAL9003)

Ordering Info

Model	Door Configuration	Length of Rail
RG-AT200D-4	Single / Double	4.2M
RG-AT200D-5	Single / Double	5.0M
RG-AT200D-6	Single / Double	6.0M

RG-AT200D SINGLE/DOUBLE,4.2M/5.0M/6.0M



Office Line
+6 03-8066 8482
+6 03-8060 2818



Hot Line
+6 019-348 1168
+6 013-234 6821



Email
sales@vshgroup.com.my

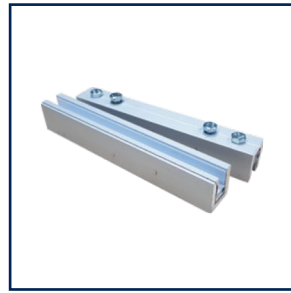


Address
No.93, Jalan BP 7/2, Bandar Bukit Puchong, 47120 Puchong, Selangor.





Wireless Push Button



Glass Clamp



Safety Beam Sensor



Key Switch



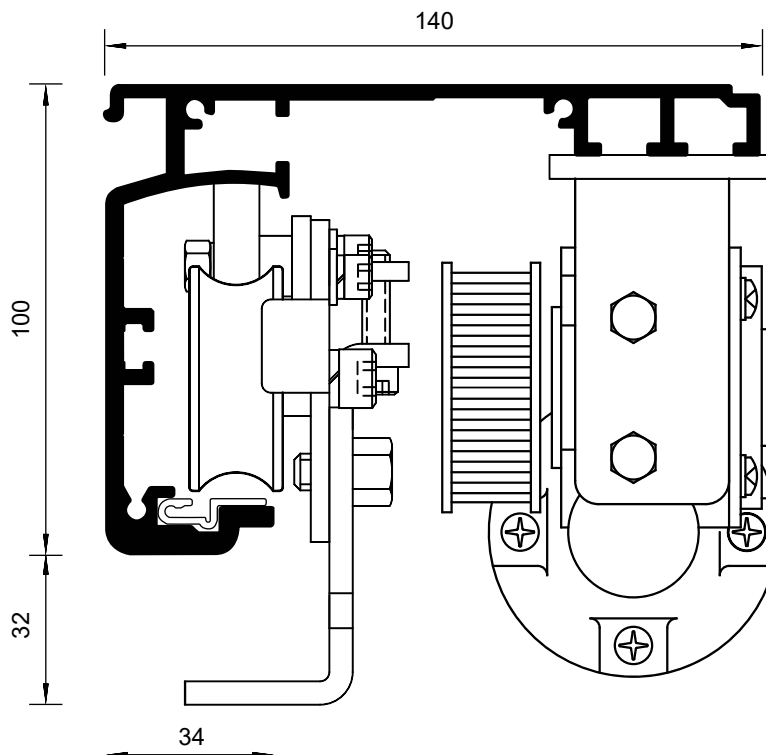
Drop Bolt Lock



Battery Pack

Dimension Drawings (mm)

*All specification is subject to change without prior notice.



Office Line

+6 03-8066 8482
+6 03-8060 2818



Hot Line

+6 019-348 1168
+6 013-234 6821



Email

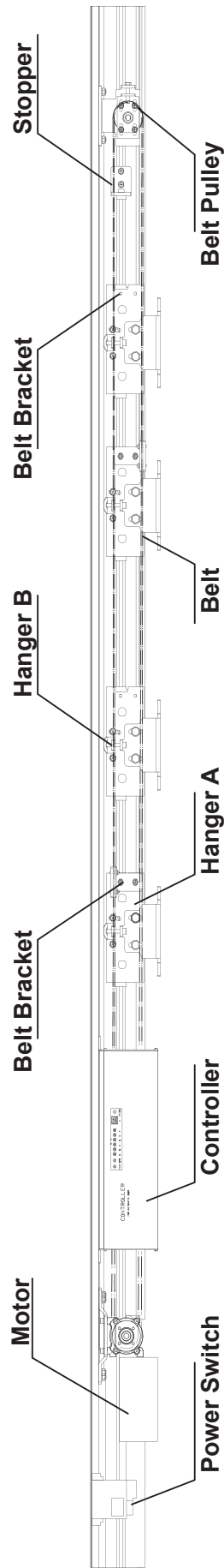
sales@vshgroup.com.my



Address

No.93, Jalan BP 7/2, Bandar Bukit Puchong, 47120 Puchong, Selangor.





Office Line

+6 03-8066 8482
+6 03-8060 2818



Hot Line

+6 019-348 1168
+6 013-234 6821



Email

sales@vshgroup.com.my



Address

No.93, Jalan BP 7/2, Bandar Bukit
Puchong, 47120 Puchong, Selangor.

