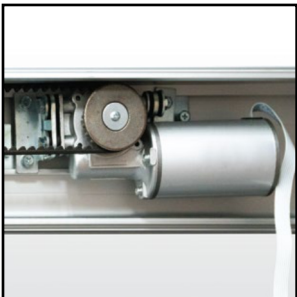




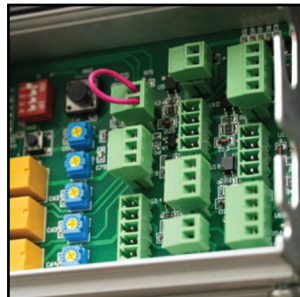
Ranger automatic sliding door operator are easy installed, durable, reliable performance, safe and low noise operation. You can transform your any door rapidly into an automatic sliding door without complication. Range automatic sliding door operator also able to increase convenience and provide barrier-free access for the disabled too.

Ranger automatic sliding door operator highly recommend for application at your living space, working environment etc to make your place more securely.



### Heavy-duty Motor

Adopting heavy-duty brushless motor with a long service life & larger torque.



### Built-in Control Unit

Easy adjust sliding door precision move according door size & weight.



### Reliability

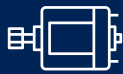
High reliability synchronous belt, drive door forward and backward with help of hanger.



### Stable

Adjustable door hanger and clamp type door support even heavier glass door with smooth operation on the railway.





### High Power Brushless Motor

Adopting a modern design, uses a globally trusted high-power brushless motor and brand new mechanical components.



### Suitable for Heavy-duty Use

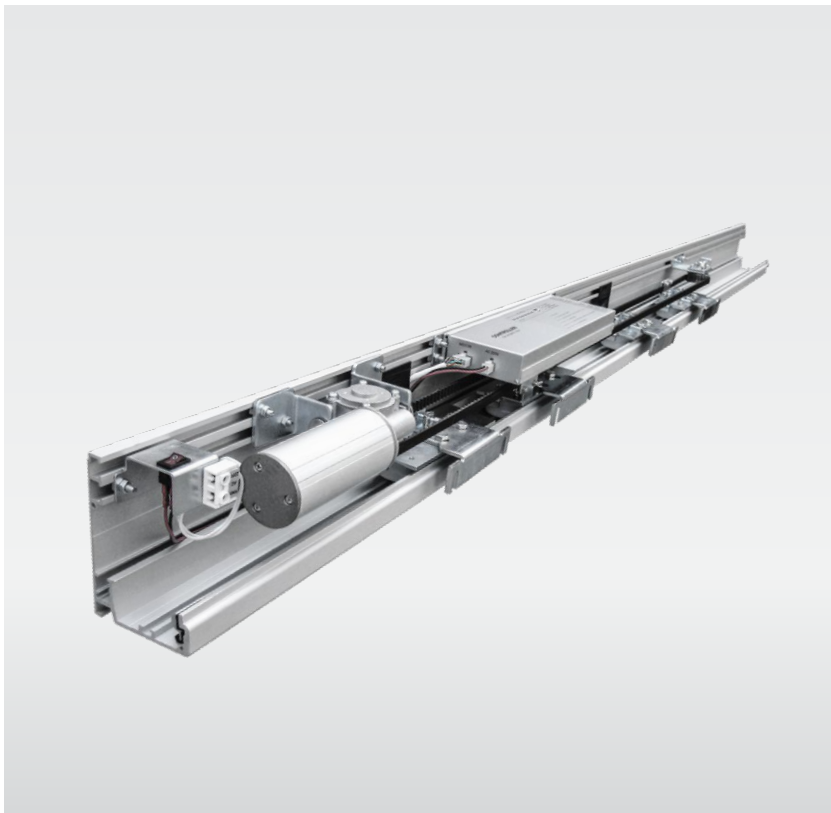
Designed to take oversized or heavy doors & suitable for a wide range of commercial, industrial and residential applications such as large feature doors or large factory doors.

**KG**  
**280**

### Maximum Door Weight

Maximum support door weight up to 280KG.

\*All image and specification is subject to change without prior notice.



Technical Data	RG-AT250D-4	RG-AT250D-6
Length of Rail	4.2M	6M
Door Configuration	Single /	Double
Door Leaf Weight	≤ 1 x 280KG	≤ 2 x 250KG
Clean Open Width	1000~2800mm	1800~3800mm
Frequency	300~550mm/s(Adjustable)	
Opening Speed	200~500mm/s(Adjustable)	
Closing Speed	1~10s(Adjustable)	
Duty Cycle	AC220V	
Manual Push	>100N	
Power Voltage	50-60Hz	
Power Consumption	≤ 150W	
Environment Temp.	-20°C ~ +50°C	

### Standard Colours



White Aluminium  
(Similiar to RAL9003)

### Ordering Info

Model	Door Configuration	Length of Rail
RG-AT250D-4	Single / Double	4.2M
RG-AT250D-6	Single / Double	6.0M

RG-AT250D SINGLEDOUBLE,4.2M6.0M



**Office Line**  
+6 03-8066 8482  
+6 03-8060 2818



**Hot Line**  
+6 019-348 1168  
+6 013-234 6821



**Email**  
sales@vshgroup.com.my

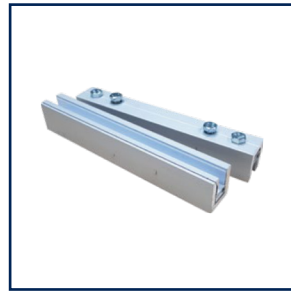


**Address**  
No.93, Jalan BP 7/2, Bandar Bukit  
Puchong, 47120 Puchong, Selangor.





Wireless Push Button



Glass Clamp



Safety Beam Sensor



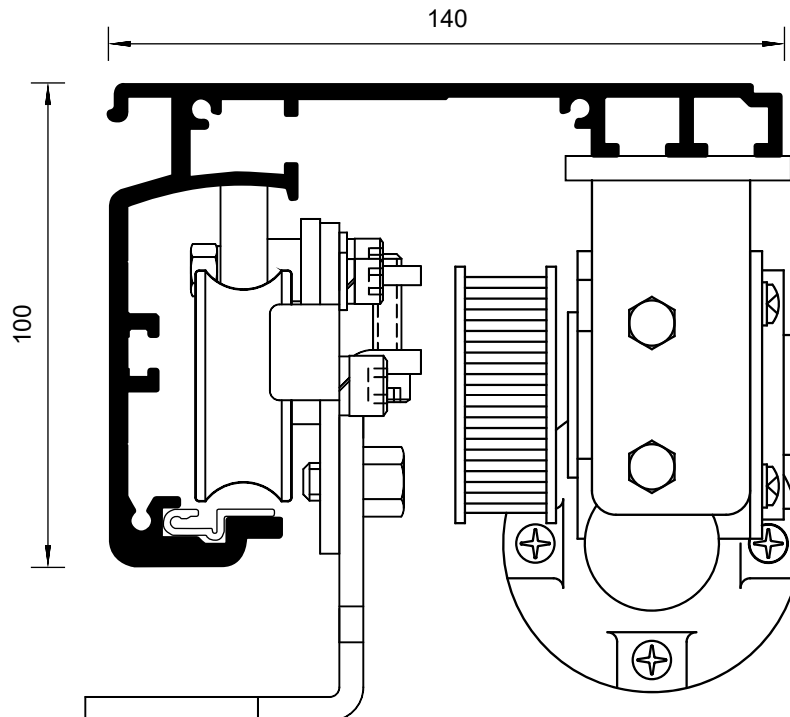
Key Switch



Drop Bolt Lock



Battery Pack



**Office Line**  
+6 03-8066 8482  
+6 03-8060 2818



**Hot Line**  
+6 019-348 1168  
+6 013-234 6821

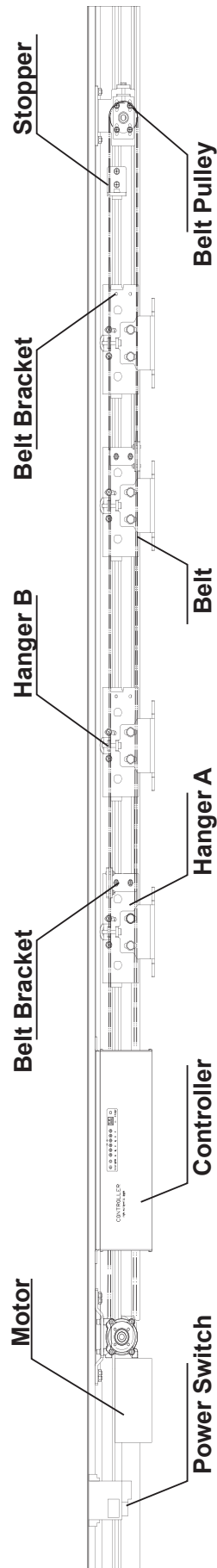


**Email**  
sales@vshgroup.com.my



**Address**  
No.93, Jalan BP 7/2, Bandar Bukit  
Puchong, 47120 Puchong, Selangor.





**Office Line**

+6 03-8066 8482  
+6 03-8060 2818



**Hot Line**

+6 019-348 1168  
+6 013-234 6821



**Email**

sales@vshgroup.com.my



**Address**

No.93, Jalan BP 7/2, Bandar Bukit  
Puchong, 47120 Puchong, Selangor.

