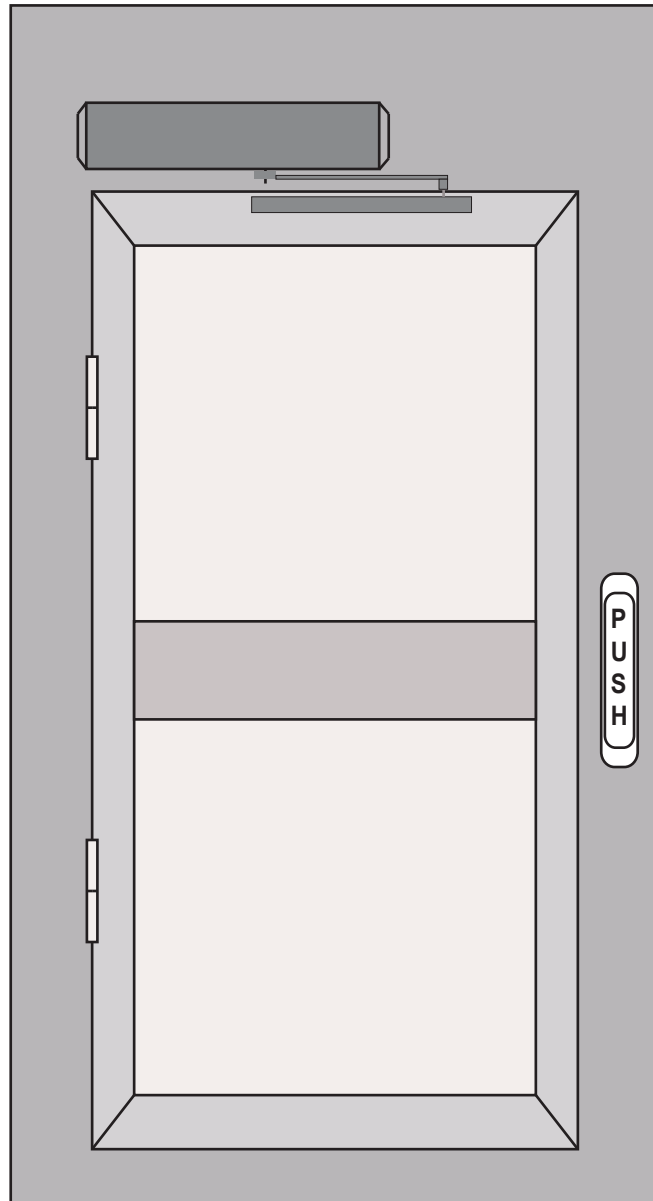


# MANUAL

RG-AT30S-I/O



**AUTOMATIC ENTRANCE SPECIALISTS**

# Content

|     |                              |       |
|-----|------------------------------|-------|
| 1   | Technical parameters         | 1     |
| 2   | Components                   | 2     |
| 3   | Installation step            | 3-10  |
| 3.1 | Installation demonstration   | 3     |
| 3.2 | Installation of bottom plate | 4-5   |
| 3.3 | Installation of pull bar     | 6-7   |
| 3.4 | Installation of push bar     | 8-9   |
| 3.5 | Installation of mechanism    | 10    |
| 3.6 | Installation of cover        | 10    |
| 4   | Wire diagram                 | 11-12 |
| 5   | Data setting                 | 13    |
| 6   | Function of remote           | 14    |
| 7   | LED instructions             | 15    |

# 1. Technical Parameters

---

Power: AC 200V-240V

Active open time: 3-7s/90°

Hold open time: 1-20s

Temperature: -20°C- +55°C

Protection class: IP12D

Product weight: Product weight 5.5kg

Pull bar 0.9kg

Push bar (optional) 0.9kg

Product size: 600\*85\*110mm

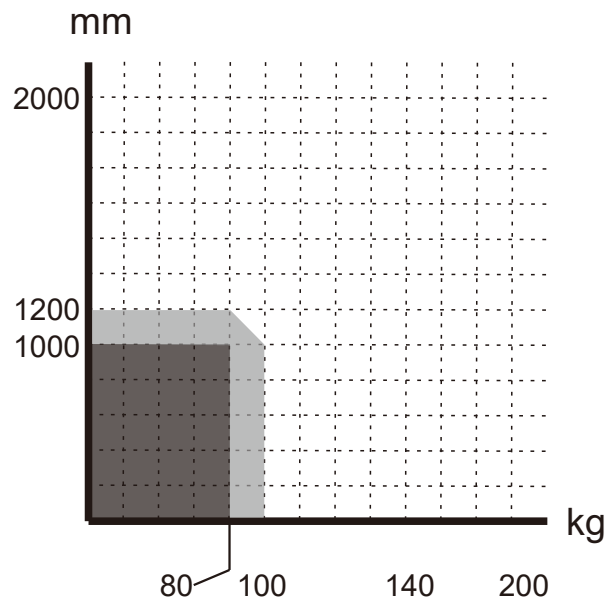
Max open angle: 110°

mm = Door width

kg = Door weight

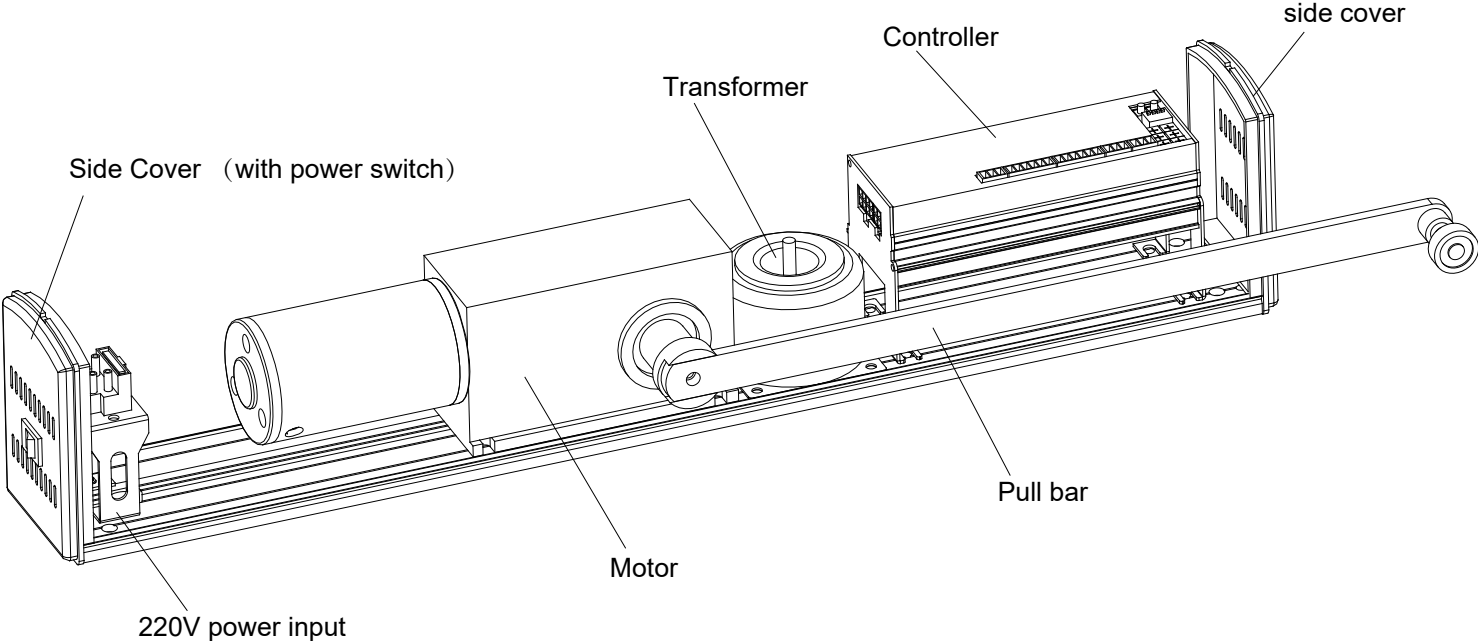
 Suitable range

 Limited range



# 2.Components

---

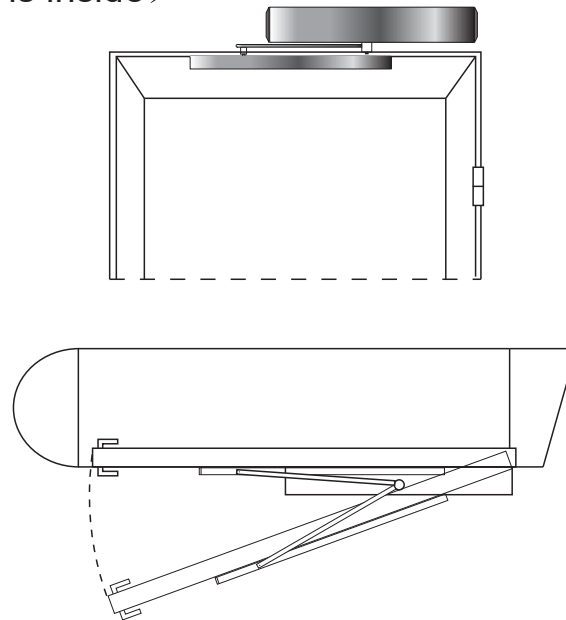


# 3. Installation step

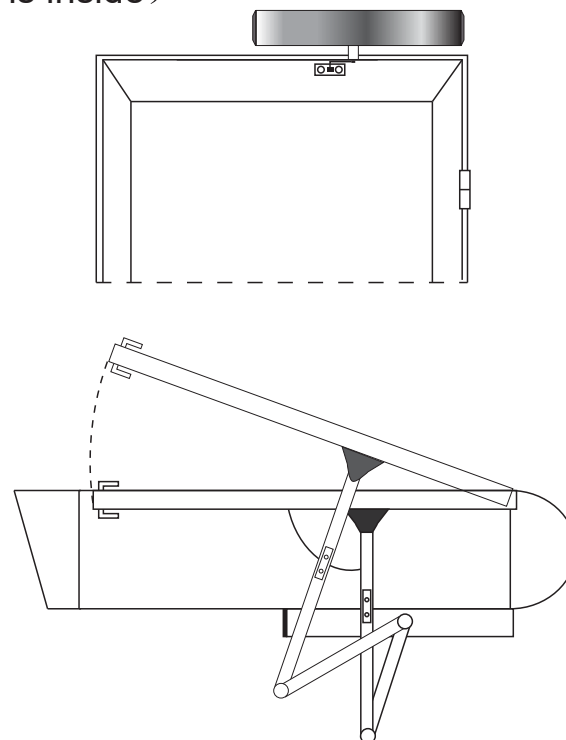
---

## 3.1 Installation demonstration

Installation of Pull bar type, suit for door open to inside  
(mechanism is inside)



Installation of push bar type, suit for door open to outside  
(mechanism is inside)

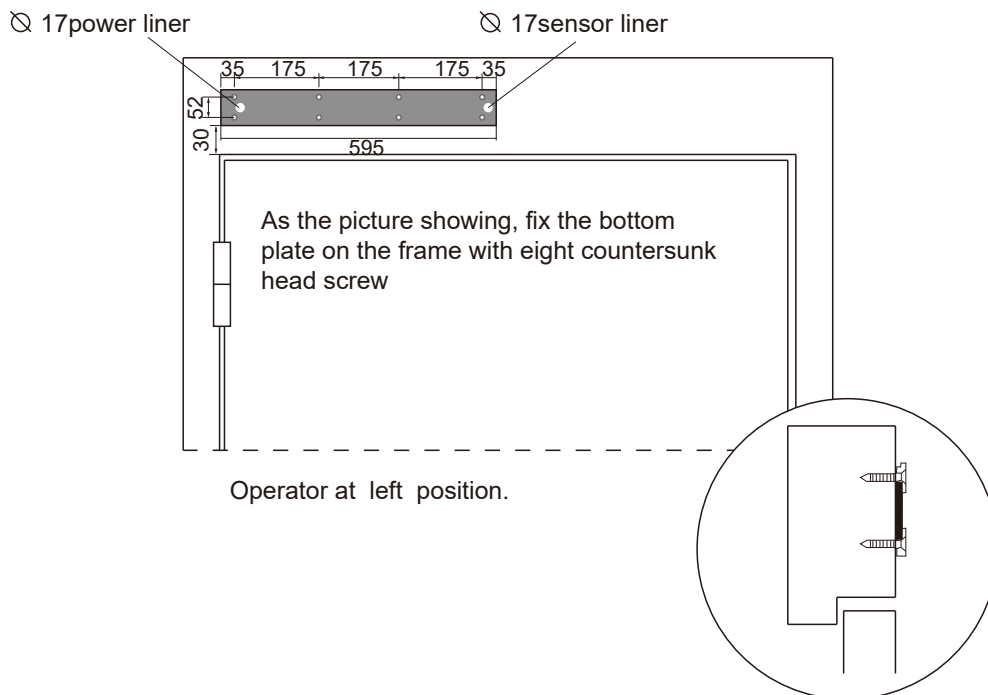
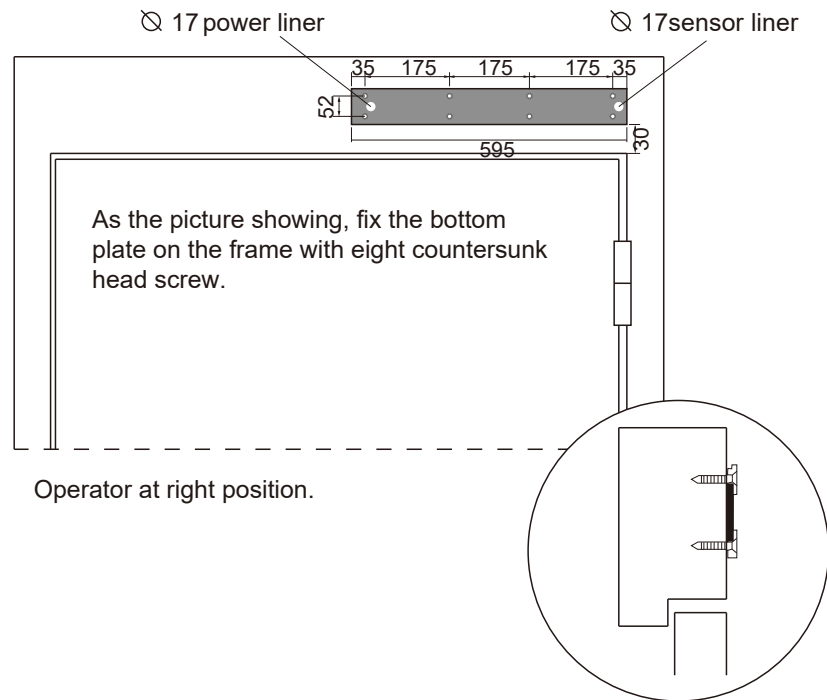


# 3. Installation step

---

## 3.2 Installation of bottom plate

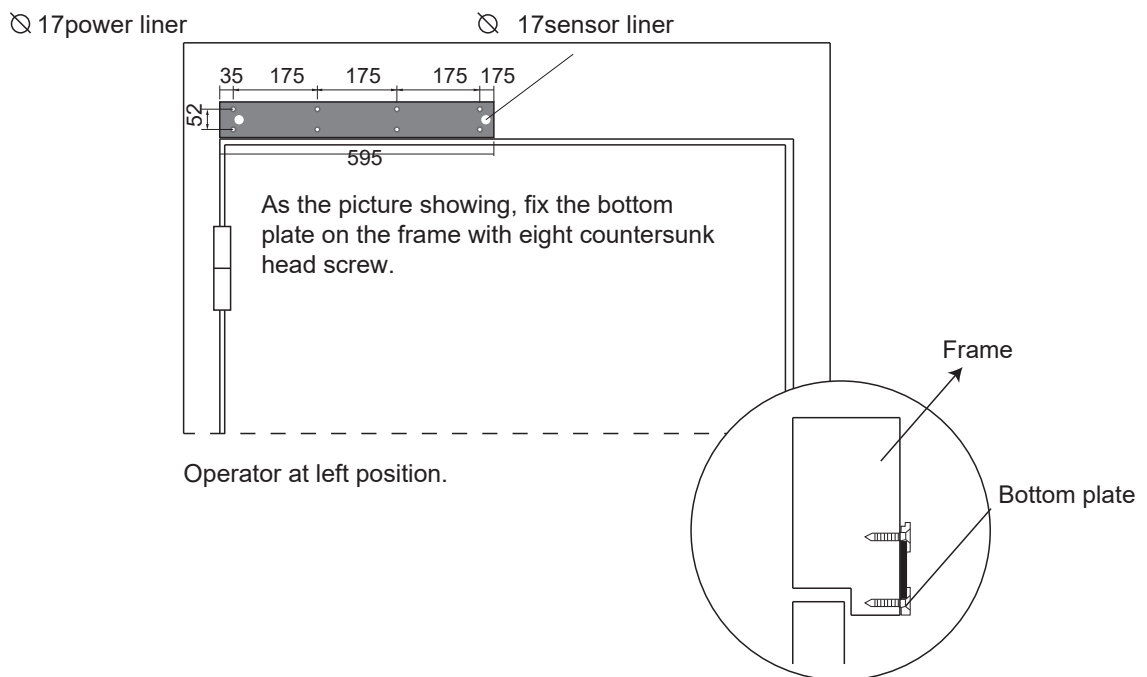
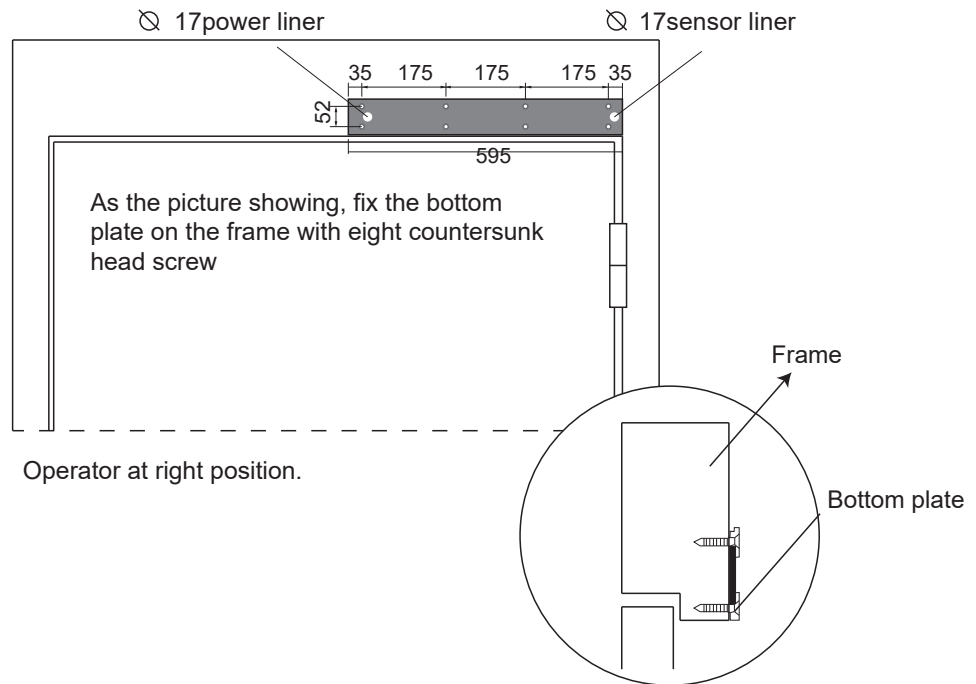
### Installation of pull bar type



# 3. Installation step

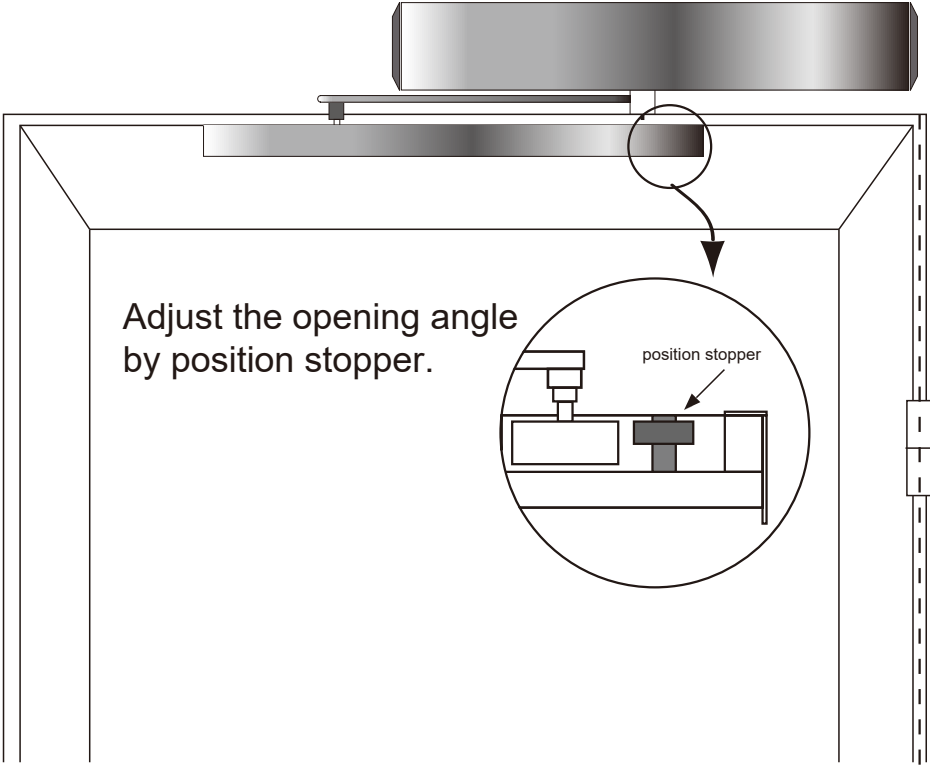
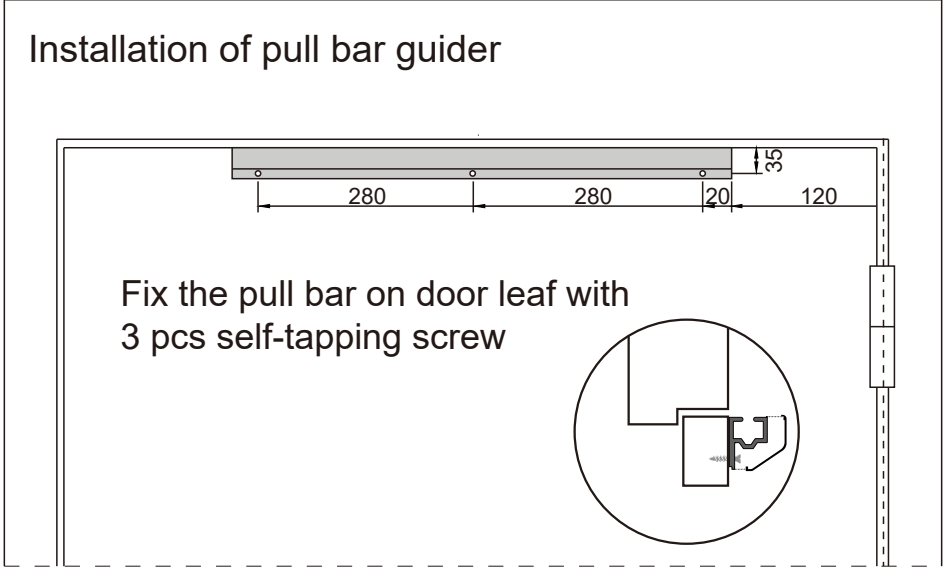
## 3.2 Installation of bottom plate

### Installation of push bar type



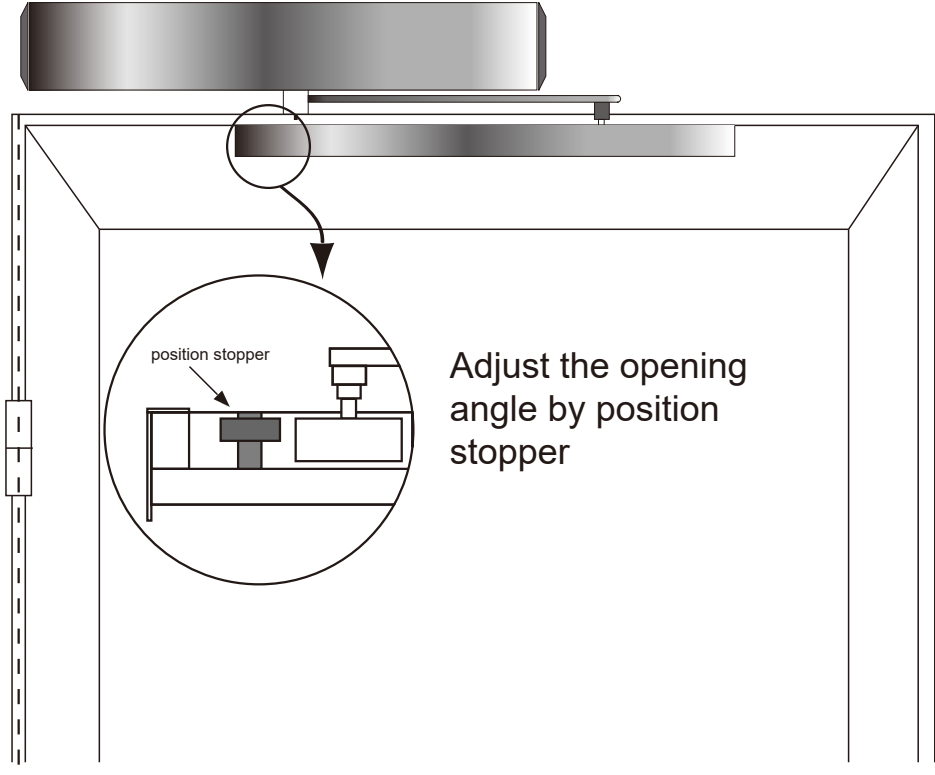
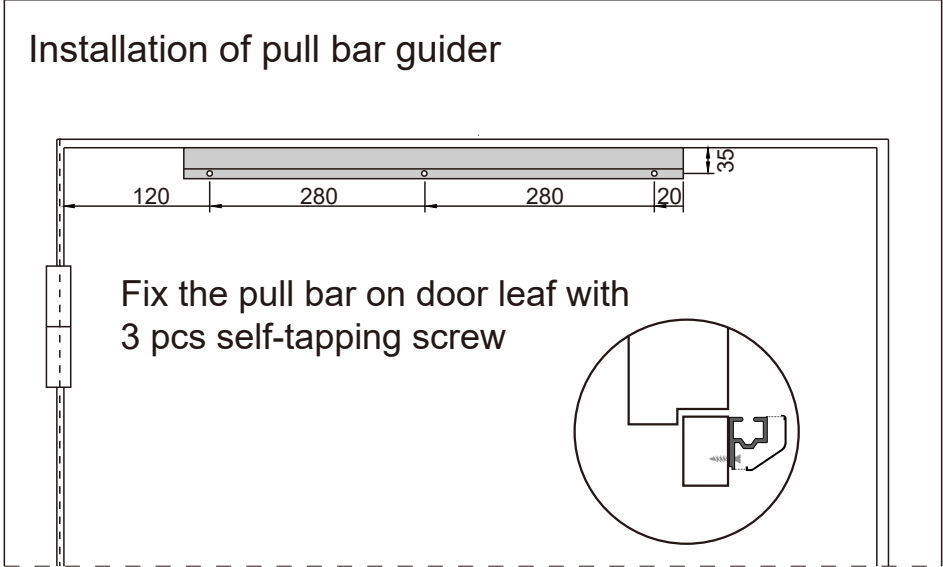
# 3.Installation step

## 3.3 Installation of pull bar guider(Right position)



# 3.Installation step

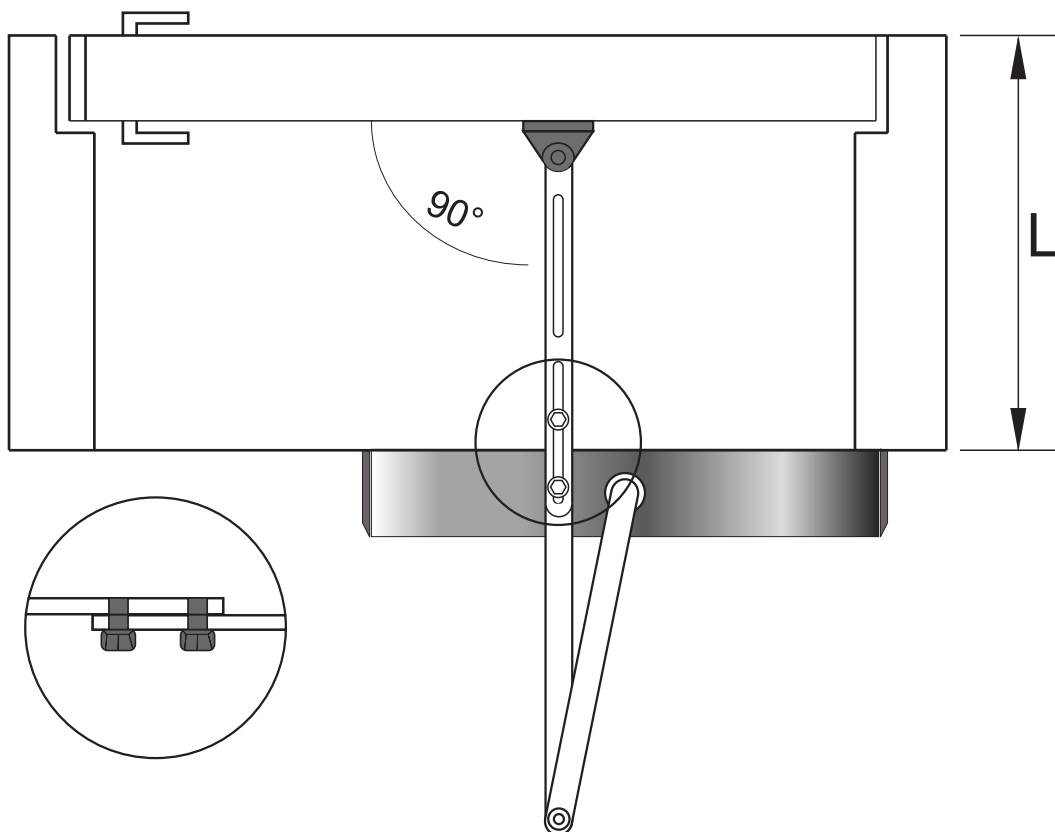
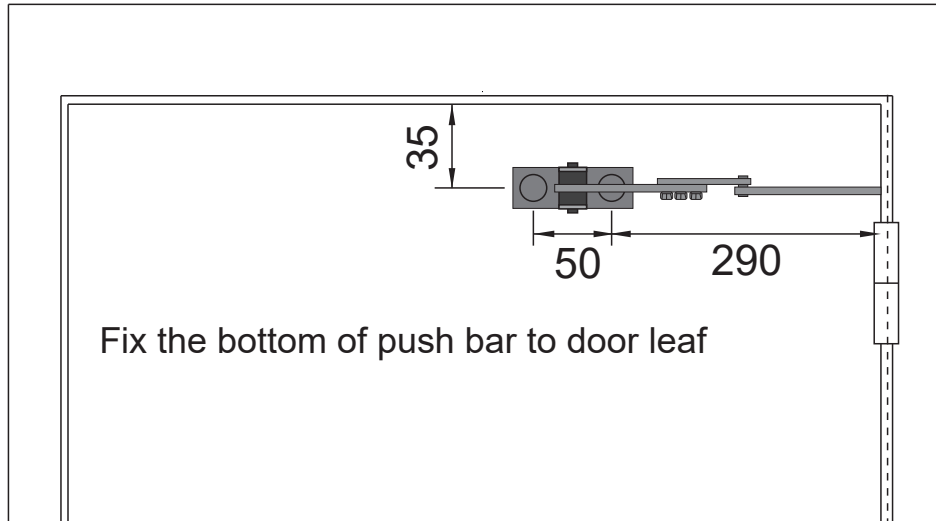
## 3.3 Installation of pull bar guider( Left position)



# 3. Installation step

---

## 3.4 Installation of push bar (Right position)

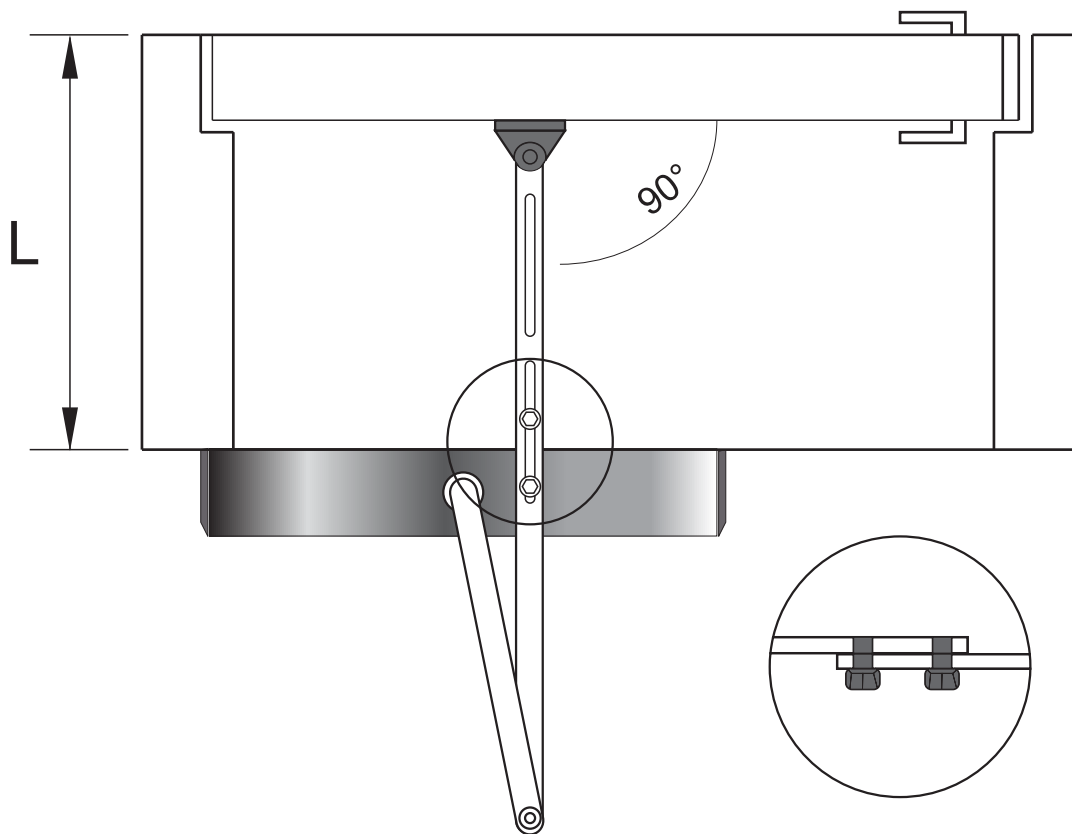
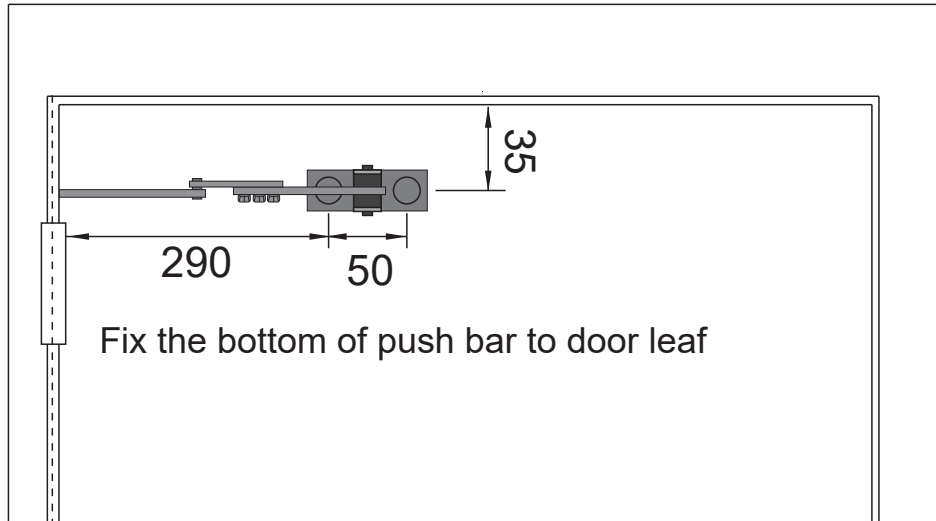


Adjust the push bar length by two screws according to the door frame's depth(L)

# 3. Installation step

---

## 3.4 Installation of push bar (Left position)

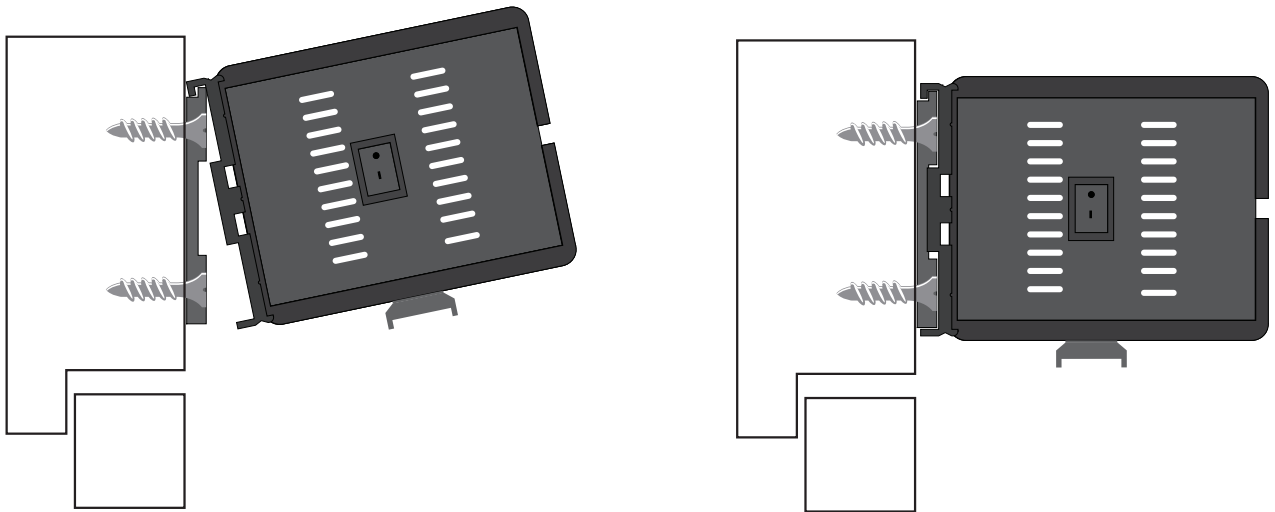


Adjust the push bar length by two screws according to the door frame's depth(L)

# 3.Installation step

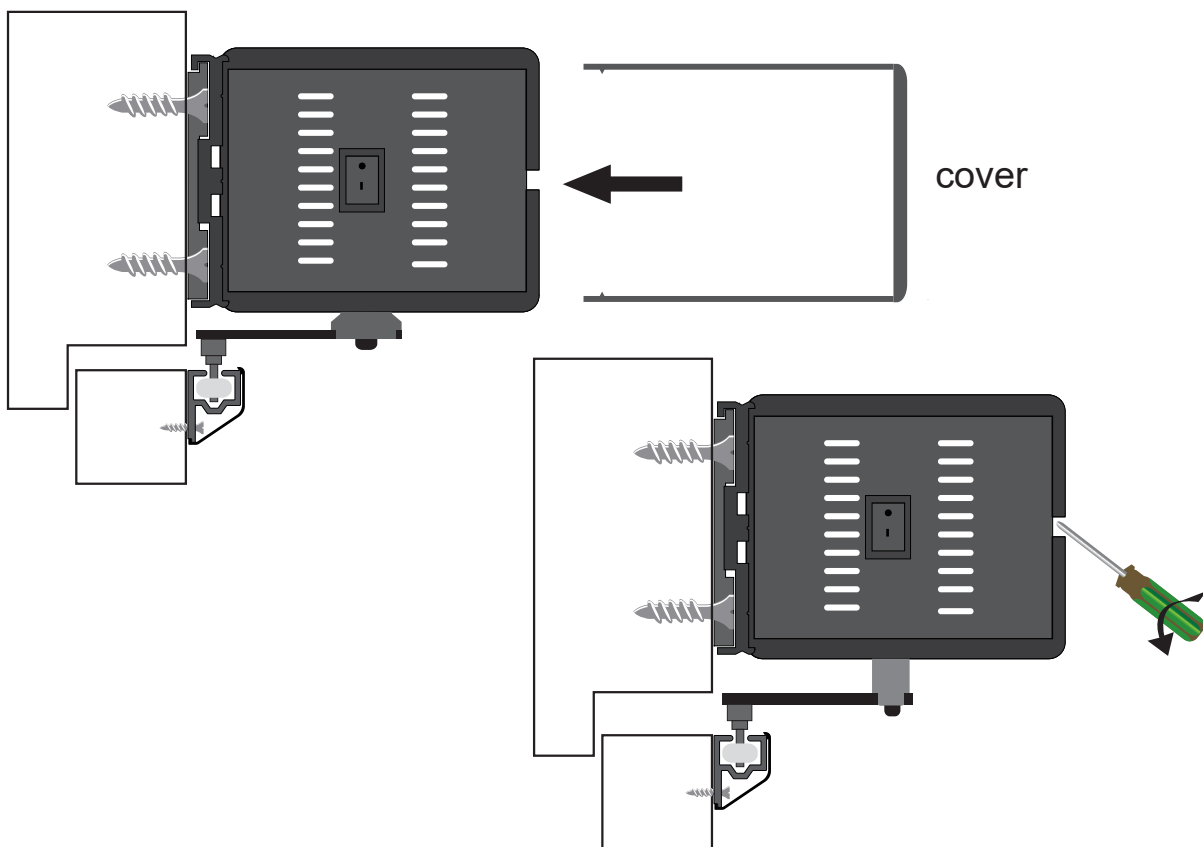
---

## 3.5 Mechanism installation

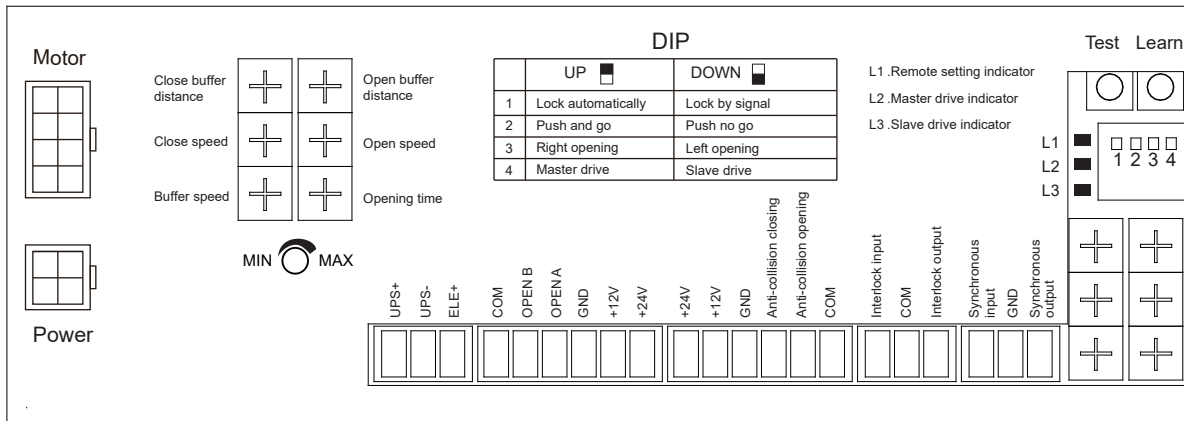


Hang the mechanism on the fixed base cover with screws.

## 3.6 Assemble and disassemble of the mechanism up cover



# 4.Wire diagram



## Inter lock

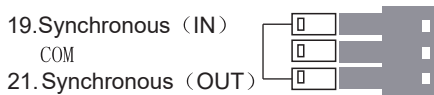


## Synchronous

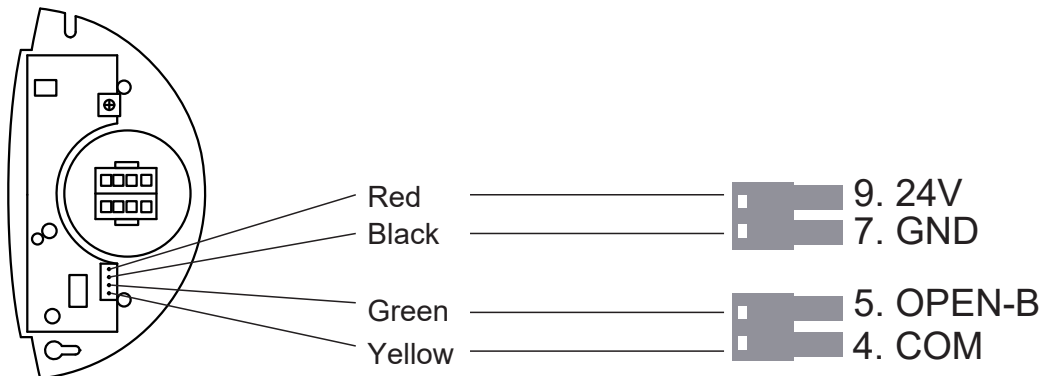


Attention: Controller will alarm while synchronous line not connect or wrong connect  
buzzer will not bip, red and green led will flash 3 times within 4 second

In single mode: bridge connect terminal 19 and 21

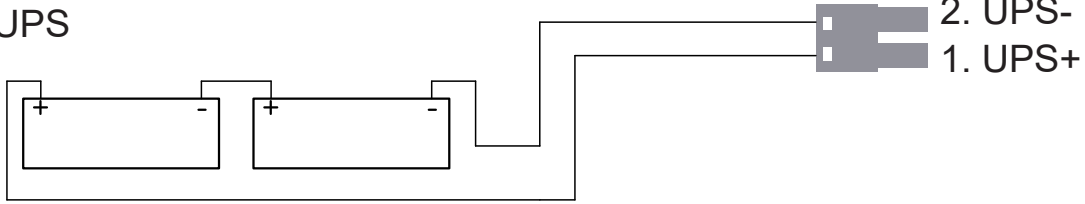


## 24G Microwave sensor

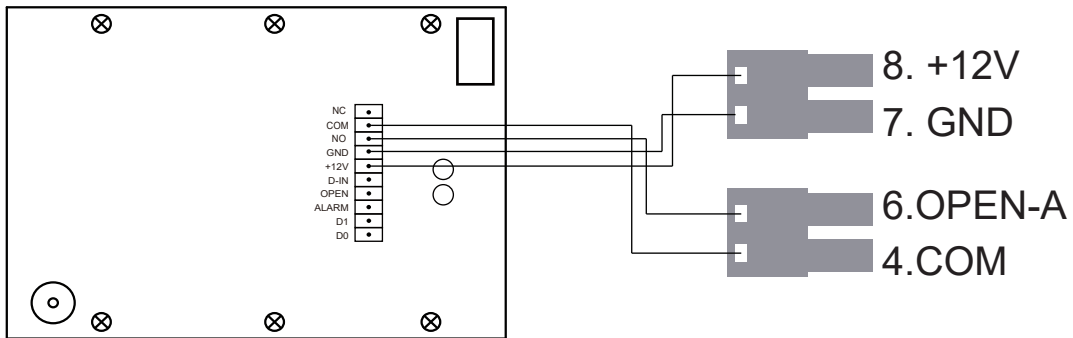


# 4.Wire diagram

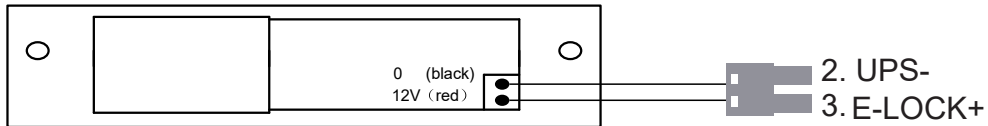
UPS



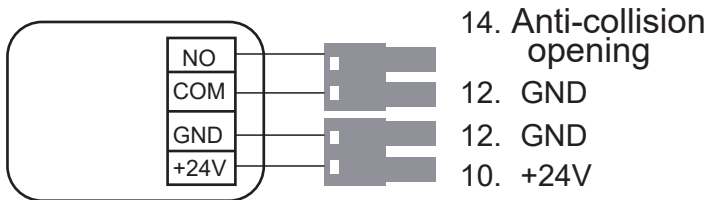
AK04



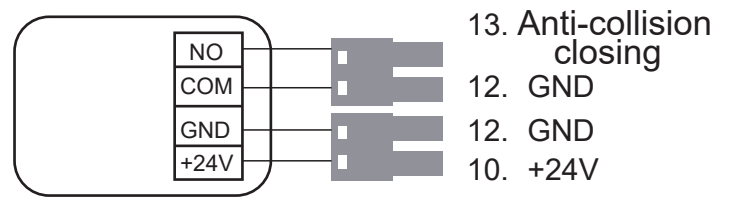
E-LOCK



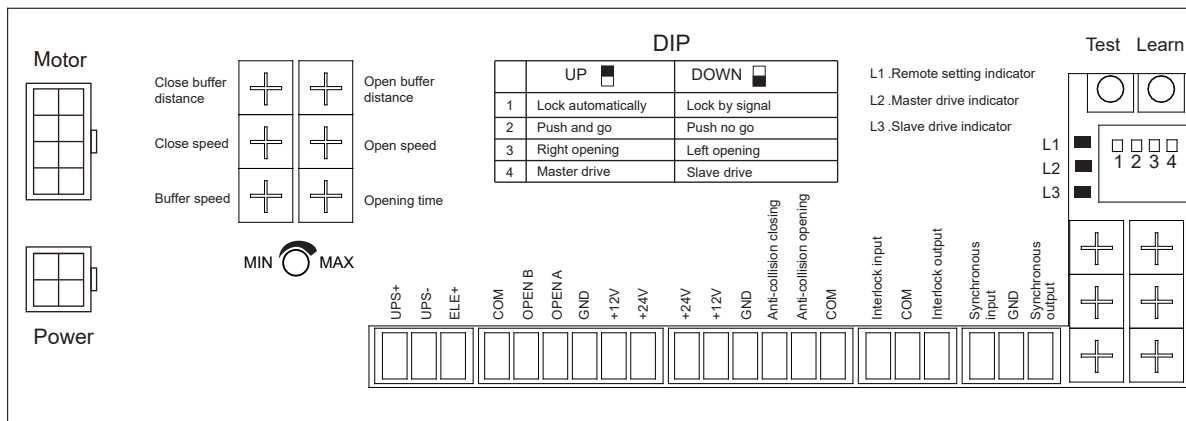
Anti-collision opening sensor



Anti-collision closing sensor



# 5. Data setting



- Close buffer speed: Distance increase clockwise
- Open buffer speed: Distance increase clockwise
- Open speed: Open speed increase clockwise
- Close speed: Close speed increase clockwise
- Buffer speed : Buffer speed increase clockwise
- Open hold time: Hold time increase clockwise (0-20s adjustable)

DIP switch: The selection of dip only make sense after restart system

- 1.E-LOCK:UP-Lock automatically Down-Lock by signal
- 2.Push and go : UP: Active Down: Disable
- 3.L/R switch: UP-right open Down-left open (Power on, in the default mode door move to the close direction is correct, Please change the position of Dip switch if door in open direction)
- 4.Master and slave : UP-Master drive , Down-Slave drive

Button on the controller

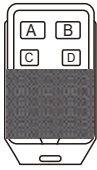
- Test: Test button, Press to active one open-close round
- Learn : Remote setting button

LED Indicator

- L1: Indicator of remote setting (Blue)
- L2: Master drive indicator, Led flash 1 time in 4second (Red)
- L3: Slave drive indicator, Led flash 1time in 4 second (Green)

# 6.Function of remote

---

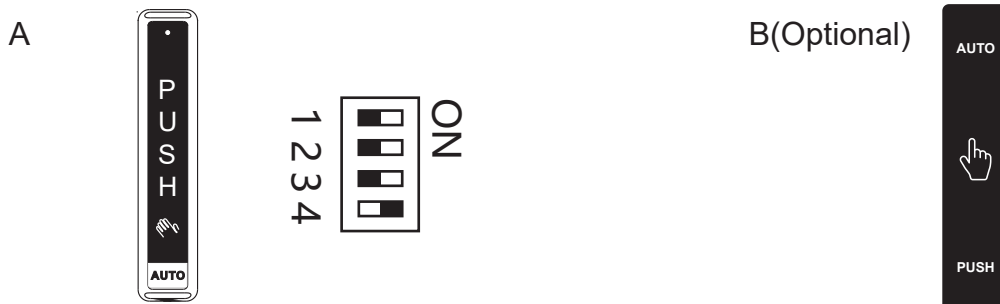


**FC04: A Always open B Automatic C:Open one time D Full lock**

Add the remote: Keep press the learning button on controller, L1 Blue Led is on , release learn button and press A on remote , Blue led flash 3 times , remote is added

Delet remote: Keep press the learning button 9 second , L1 turn from blue to flash, all the remote is delet (attention: while the process of delet, learning button should keep press )

Wireless push button : Added and deleted wireless push button is same as remote.



Type a please check the dip switch if it's same as the image shown (during setting process)

## Notes

1. Receiver has been built-in only need remote to approve the always open , automatic, open one time , full lock function, and also fit with wireless push button PB04 to open the door , When controller is full lock , PB04 still can active the door
2. Exit only function:Connect outside sensor or button to terminal"Open-B", connect inside sensor or button to terminal "Open-A".Then press "full lock" button on remote
- 3.In double open mode: connect Synchronous line refer to the manual .power on ,make sure the setting is same If open and close speed is not same,please adjust open /close speed, open/close buffer speed,open hold time.
- 4.When double open, the transmitter should learn both operators together.
- 5.In double open mode, accessories should connect to both controller ( parallel connection )

## 7.LED instructions

---

| Double open                                    |   |  |
|--|---|--|
|  | Master drive  | Slave drive  |
| Normal working                                 | Red Led flash every 4seconds, Meanwhile Green led off                       | Green Led flash every 4seconds, Meanwhile Red led off                        |
| Learning mode                                  | Red Led on 2seconds, Off 2seconds within 4 seconds, Meanwhile Green Led off | Green Led on 2seconds, Off 2 seconds within 4 seconds, Meanwhile Red led off |
| Set both operator as main drive or slave drive | Buzzer not bip , Red and green led flash 2times within 4seconds             |  |
| Not connect synchronous line or wrong connect  | Buzzer not bip, Red and green led flash 3times within 4seconds              |  |

| Single open    |   |
|----------------|---|
| Normal working | Red and green LED alternately brighten,Red led light up while green off 1second, then Green led light up while red off 1seconds |
| Learning mode: | Red and green LED alternately brighten,Red led light up while green off 2second, then Green led light up while red off 2seconds |

Overcurrent protection Buzzer bip each 1 second , Red led and green led flash 4 times together within 4seconds

Motor problem Buzzer bip each 2 seconds, Red led and green led flash 5 times together within 4seconds