

# SenseFace 2A WIFI

SIP-Ready Multi-Biometric Access Control Terminal with Video Intercom Capability



Facial Authentication



RFID



Fingerprint



Video Intercom (SIP)

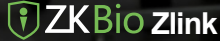


Built-in Wi-Fi

Compatible with



Compatible with



## Introduction

SenseFace 2A adopts the latest intelligent engineering facial authentication. It supports fingerprint, facial, card authentication with large capacity and speedy authentication, adopts ultimate antispoofing algorithm for facial authentication against almost all types of fake photos and videos attack, which offering secure biometric authentication.

SenseFace 2A is an access control terminal featuring a video intercom function and supports ONVIF protocol. It fully improves the video intercom experience and can be compatible with video intercom indoor unit with SIP protocol (version 2.0).

Besides, SenseFace 2A supports multiple communication protocols. Its firmware has AC push and can convert to TA push to , it is compatible with various AC or TA softwares. Also, it can change to BEST protocol to link with ZKBio Zlink(AC module).

## Features

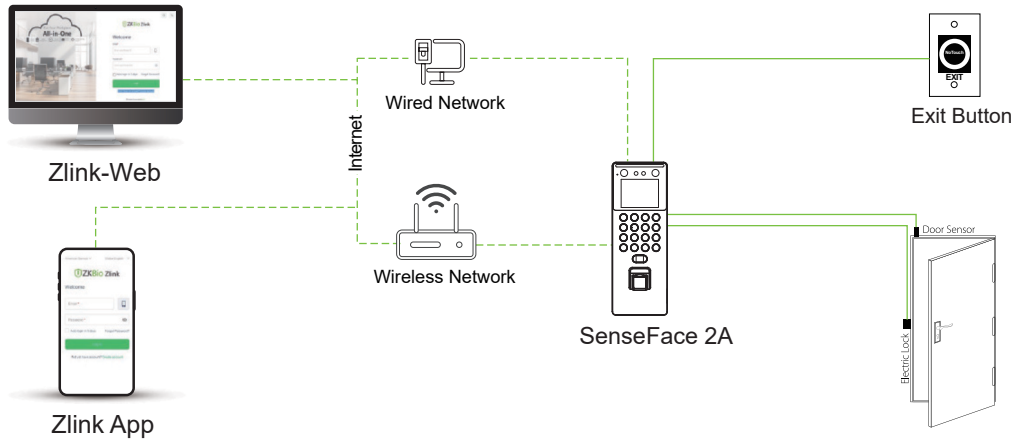
- Visible Light Facial Authentication Technology and ZK Optical Fingerprint Verification
- Multiple Authentication Methods: Facial / Fingerprint / RFID / Password
- Available RFID Modules:125 kHz ID Card / 13.56 MHz IC Card
- HD Video Door Phone Via SIP Protocol (Version 2.0). Compatible With ZKTeco SIP Video Intercom Indoor Monitor (VT07-B01and VT07-B01-W)
- User Data Synchronization: User data can be downloaded/uploaded from one device to another via a USB drive.
- Compatible with wireless doorbell (optional)
- Simple access control functions (Electric Lock; Door Sensor; Exit Button)

\* Download data using the USBdriver and make sure to use the FAT32format.

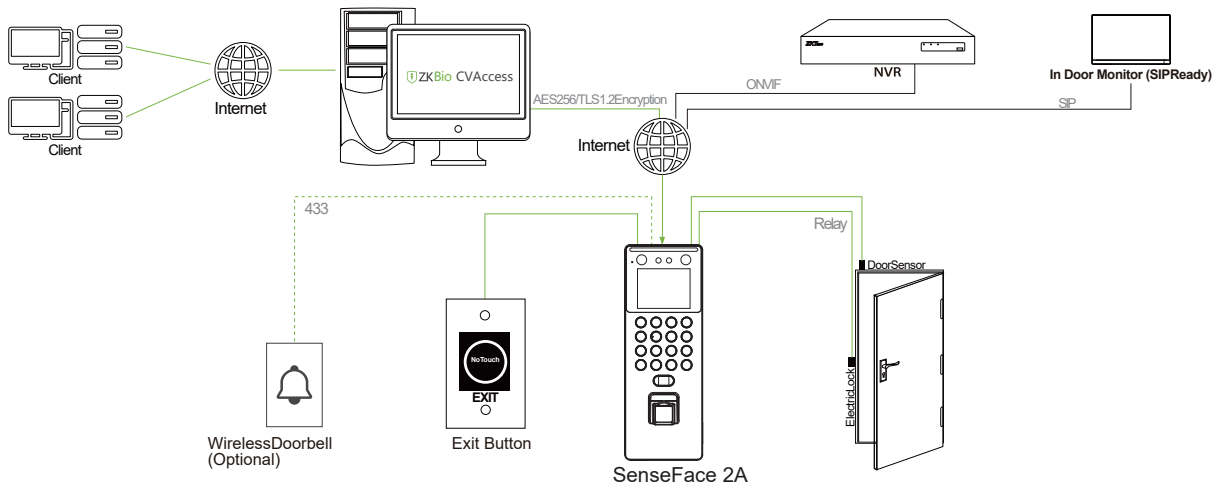
# Specifications

Model	SenseFace 2A
Display	2.4"@TFT Color LCD Screen (320*240)
Camera	WDRBinocular Camera @1MP
Operation System	Linux
Hardware	CPU: Dual Core@1GHz RAM: 512MB; ROM: 8GB Speaker: 8ohm @1W Microphone: *1 (Sensitivity: -32 dB/ Omni-directional / Signal-to-Noise Ratio: -32 dB/Impedance: 2.2kΩ) Supplement Light: Yes Physical Keypad: 17 Keys Fingerprint Sensor: ZK Optical Sensor
Authentication method	Fingerprint / Face / Card / Password (Physical Keypad)
Fingerprint Template Capacity	3,000 (1:N) (Standard)
Face Template Capacity	1,500 (1:N) (Standard)
Card Capacity	3,000 (1:N) (Standard)
User Capacity	3,000 (1:N) (Standard)
Transaction Capacity	150,000 (1:N)
Max. User Password Length	8 Digits
Biometric Authentication Speed	less than 0.5 sec (Fingerprint) less than 0.35 sec (Facial Authentication)
Touchless Biometric Authentication Distance	30cm to 200cm (Facial Authentication)
False Acceptance Rate (FAR) %	FAR≤ 0.01% (Visible Light Facial Authentication) FAR≤ 0.0001% ( Fingerprint )
False Rejection Rate (FRR) %	FRR≤ 0.02% (Visible Light Facial Authentication) FRR≤ 0.01% (Fingerprint )
Biometric Algorithm	ZKFace V4.0 ZKFingerprint V13.0 (Standard) /V10.0 (Optional)
Card Type	ID Card@125 kHz (Standard) IC Card@13.56 MHz (Optional)
Communication	TCP/IP*1 Wi-Fi (IEEE802.11b/g/n/ax) @2.4 GHz (Optional) USB: Type A (USB Drive Only )*1 Electric Lock*1, Door Sensor*1, Exit Button*1
Standard Functions	ADMS, DST, Photo Capture, Event Photo Capture, Up to 14-digit User ID, Access Levels, Groups, Holidays, Record Query, Schedule Bell, Tamper Switch Alarm, Automatic Status Switch, Multiple AuthenticationMethods, SIP Client (Version 2.0), ONVIF (Compatible with Profile S, Profile T, Profile G, Profile C, Profile Q & Profile A), AC Push and TA Push Protocol Switch, HTTPs / SSH Backend Access, T9 Keyboard (Input)
Optional Functions	IC Card, Wi-Fi, Wireless Doorbell
Power Supply	DC 12V 1.5A
Operating Temperature	-5°C to 45°C
Operating Humidity	20% to 80% RH (Non-condensing)
Dimensions	205.20 mm*74.19 mm*33.30 mm (L*W*H)
Net Weight	0.258 Kg
Supported Software	Software: ZKBio CVAccess / ZKBioTime Mobile App.: ZKBio Zlink Cloud Service: ZKBio Zlink
Installation	Wall-mount (Compatible with Asian Gang Box / Single Gang Box)
Certifications	ISO14001, ISO9001,CE, FCC, RoHS

## Configuration



## BEST Protocol



## PUSH Protocol

## Dimensions (mm)

