

SWING 333-A OAE AUTO-GATE SYSTEMS



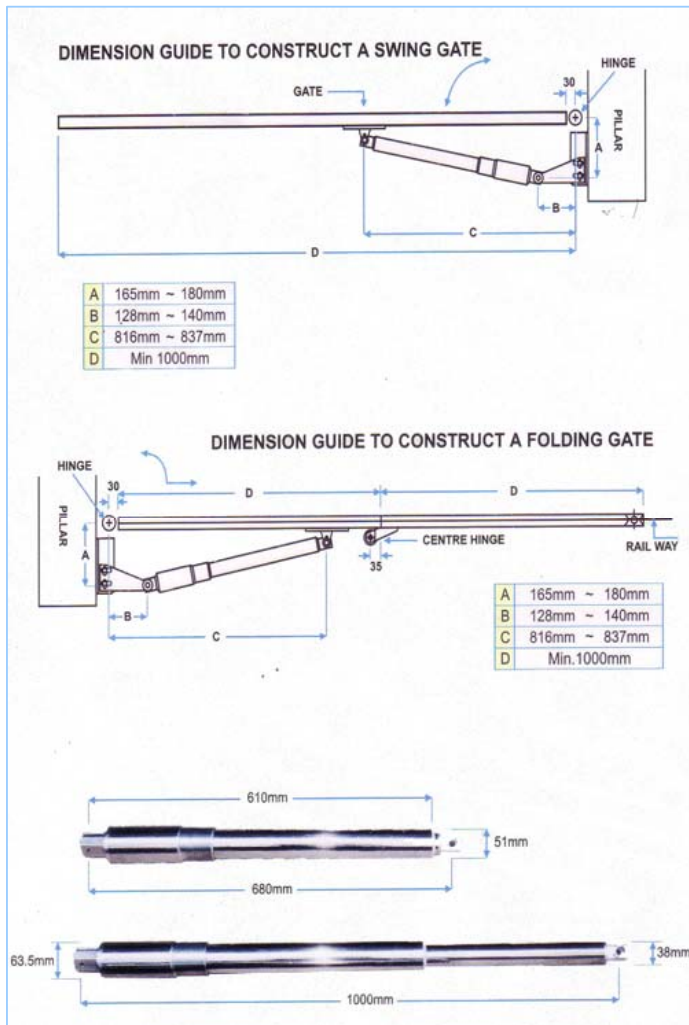
- Micro-computer fuzzy logic control.
- It works even during a blackout.

FEATURES:

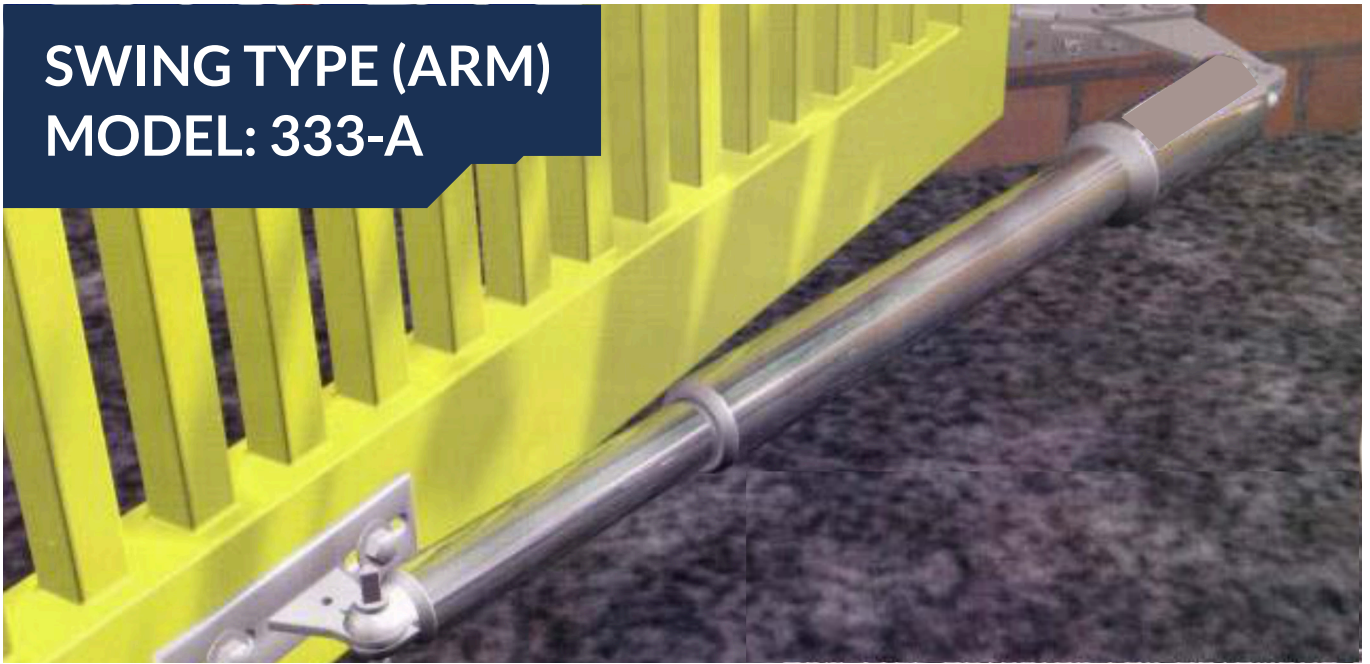
- Electronic anti-crusing sensor, automatic reopen if it hits something.
- Timer control automatic closing (you must obey some safety rule to activate this function).
- Non-underground motor, avoiding common problem of damages by water and mud.
- Its unique self locking mechanism does not require an extra lock at the gate. Therefore there is not more a lock stopper obstructing the drive way.
- Dual speed design with soft cushion stopping.

TECHNICAL SPECIFICATION:

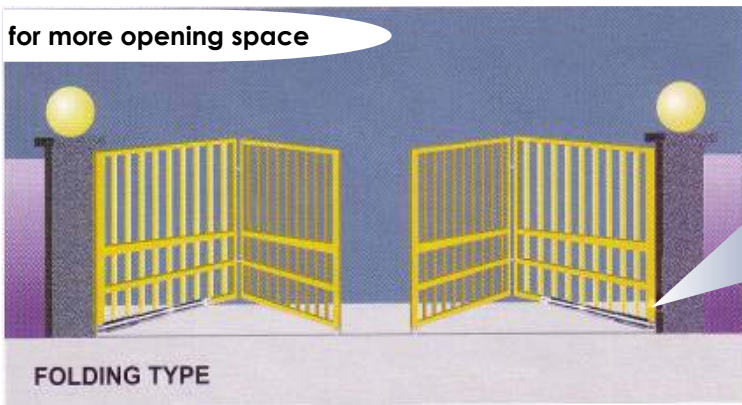
- Driving Method : Electro-mechanical screw driver piston type
- Operating Voltage : DC12V 0.90A / 2.50A , <295mm 18sec
: DC12V 1.25A / 5.0A , <295mm 8sec
- Motor Output : 15 watt per arm
- Motor Amp. : 2.1
- Piston displace : 32cm
- Piston Speed : 2.9cm/sec
- Back-up Battery : 12 volt. 7 AH Rechargeable
- Safety Clutch : Electric current sensing using Hi-Amp Auto-Reverse
- Safety Barrier : Infrared beam sensor (optional)
- Electric Controller : Micro-processor based
- Temperature : 0 to 55° C
- Gear Box : Three stages planetary reducer
- Manual Operation : Special released key during power failure
- Max. wrt of gate : 400 kg per wing with force adjustable
- Max. length of gate : 5 meter per wing
- Torque : 85kg



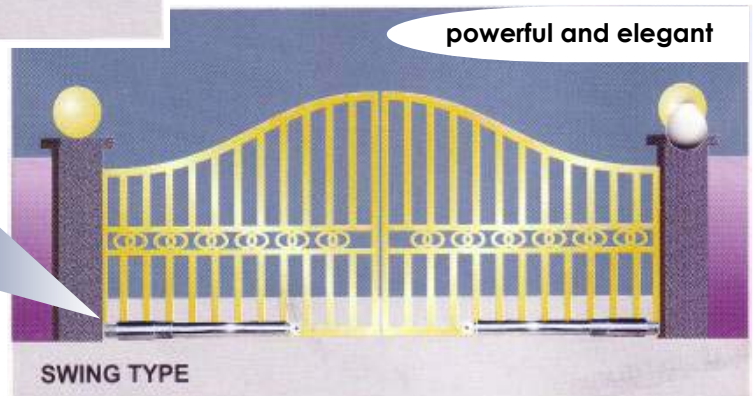
SWING TYPE (ARM) MODEL: 333-A



for more opening space



FOLDING TYPE

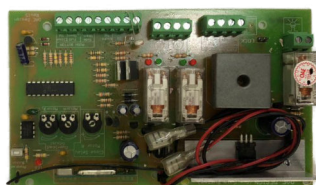


powerful and elegant

SWING TYPE



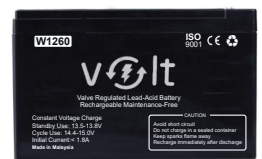
Plastic Box - Grey



Swing Panel



Remote Control Set



Volt Backup Battery